

ADDENDUM NO. 3
TO
BID DOCUMENTS BID #2223-14
BARTLEM PARK SOUTH – PHASE 1
Cheshire, CT
January 11, 2023
NOTICE TO BIDDERS

The attention of all bidders submitting proposals for “BARTLEM PARK SOUTH – PHASE 1” is called to the following Addenda to the specifications and plans. The items set forth herein, whether of omission, addition or substitution are to be included in, and form part of the specifications and plans of the above-named project for bids to be received as advertised.

**PLEASE BE SURE TO ACKNOWLEDGE
THIS ADDENDUM ON ADDENDA ACKNOWLEDGEMENT FORM.**

The following clarifications, modifications, deletions, and additions are hereby incorporated into and become part of the Contract Documents.

BID OPENING EXTENSION

The Town of Cheshire will receive sealed bids until February 15, 2023, at 11:00 AM.

COST ESTIMATE

The Town’s cost estimate for the base bid construction items as shown in the bid documents and addenda is +/- \$5.8M.

WRITTEN CHANGES AND CLARIFICATIONS TO SPECIFICATIONS

1. Specification Section 32 31 13 – CHAIN LINK FENCE, Part 2.02, C.

DELETE: 2-inches.

ADD: 1-3/4 inches.

WRITTEN CHANGES AND CLARIFICATIONS TO DRAWINGS

1. Detail Sheet L905 revised, see attached.

DELETE: Sheet L905

ADD: Sheet L905 revised 02/03/2023

- Detail #3- CIP Concrete Retaining wall at Bandshell
- Detail #4- Post Footing Detail
- Detail #5- Mountable Curb

2. Detail Sheet L910 revised, see attached.
DELETE: Sheet L910
ADD: Sheet L910 revised 02/03/2023
 - Detail #2- Collector drain.
 - Detail #3- Synthetic Turf- Nailer Curb
 - Detail #5- Synthetic Turf- Nailer Curb at Posts

3. Detail Sheet L911 revised, see attached.
DELETE: Sheet L911
ADD: Sheet L911 revised 02/03/2023
 - Detail #3- Fence Post Footing, Typ.

4. Sheet E1 revised, see attached.
DELETE: Sheet E1
ADD: Sheet E1 revised 2/03/23

5. Sheet E5 revised, see attached.
DELETE: Sheet E5
ADD: Sheet E5 revised 2/03/23

ATTACHMENTS:

L905 – SITE CONSTRUCTION DETAILS
L910 – SITE CONSTRUCTION DETAILS
L911 – SITE CONSTRUCTION DETAILS
E1 – ELECTRICAL SITE PLAN
E5 – ELECTRICAL SCHEDULES

END OF ADDENDUM NO. 3

Revisions:

No.	Date	Description
1	2/03/23	REVISED

COA:

No.	Date	Description

Seal:

Issued For:

BID DOCUMENTS

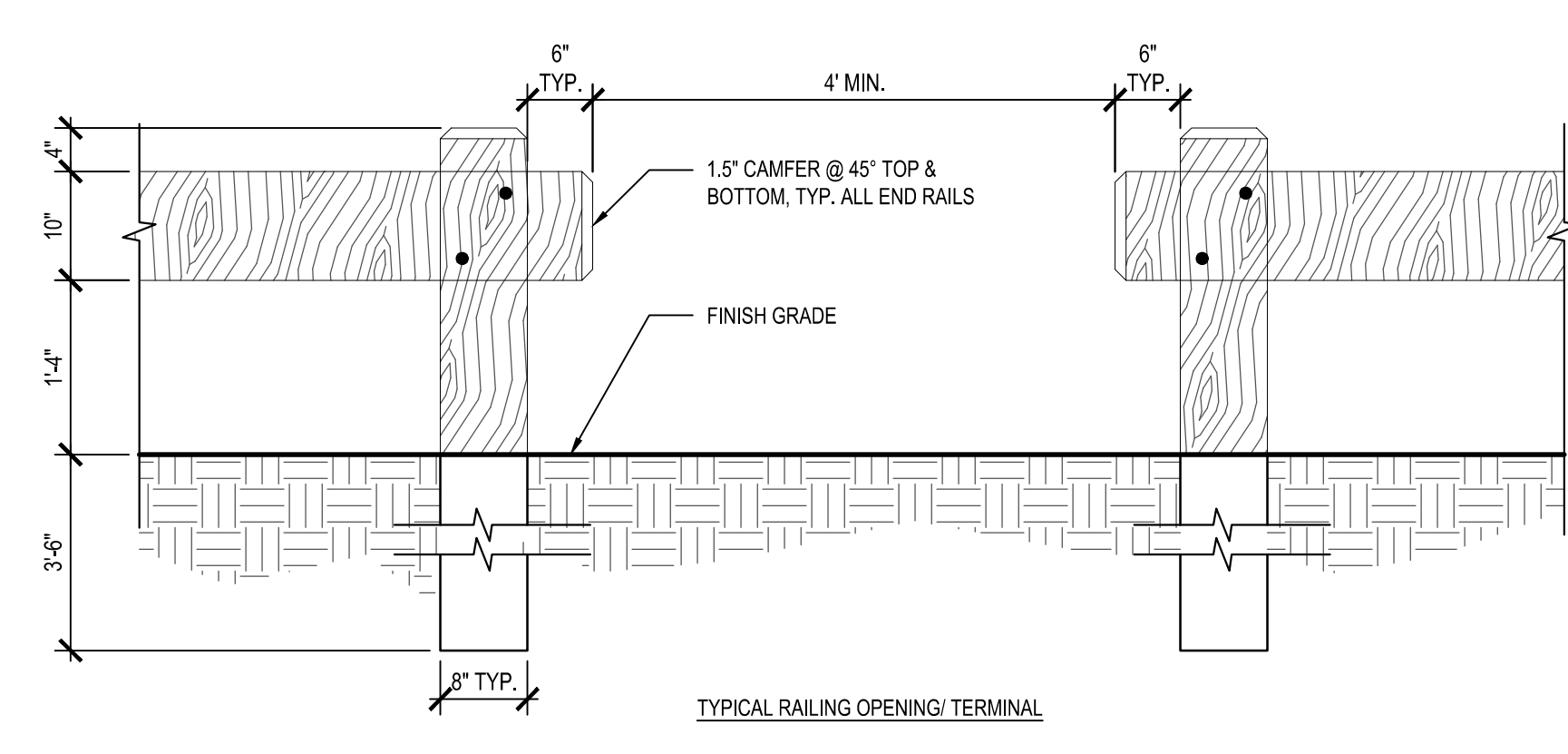
Scale: N.T.S.

Date: 1/11/2023
 Drawn By: --
 Reviewed By: --
 Approved By: --

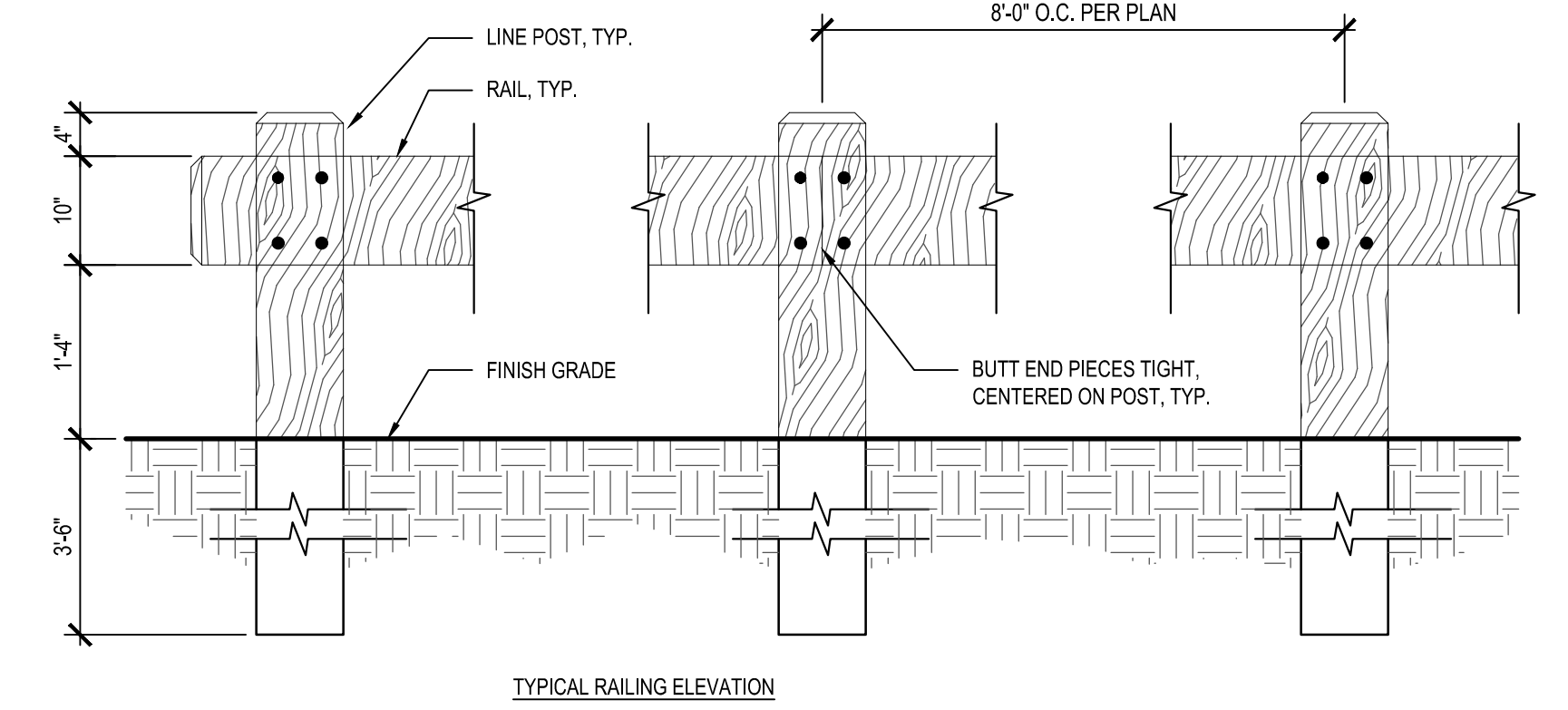
W&S Project No.: ENG22 - 0258
 W&S File No.:

Drawing Title:
SITE CONSTRUCTION DETAILS

Sheet Number:
L905

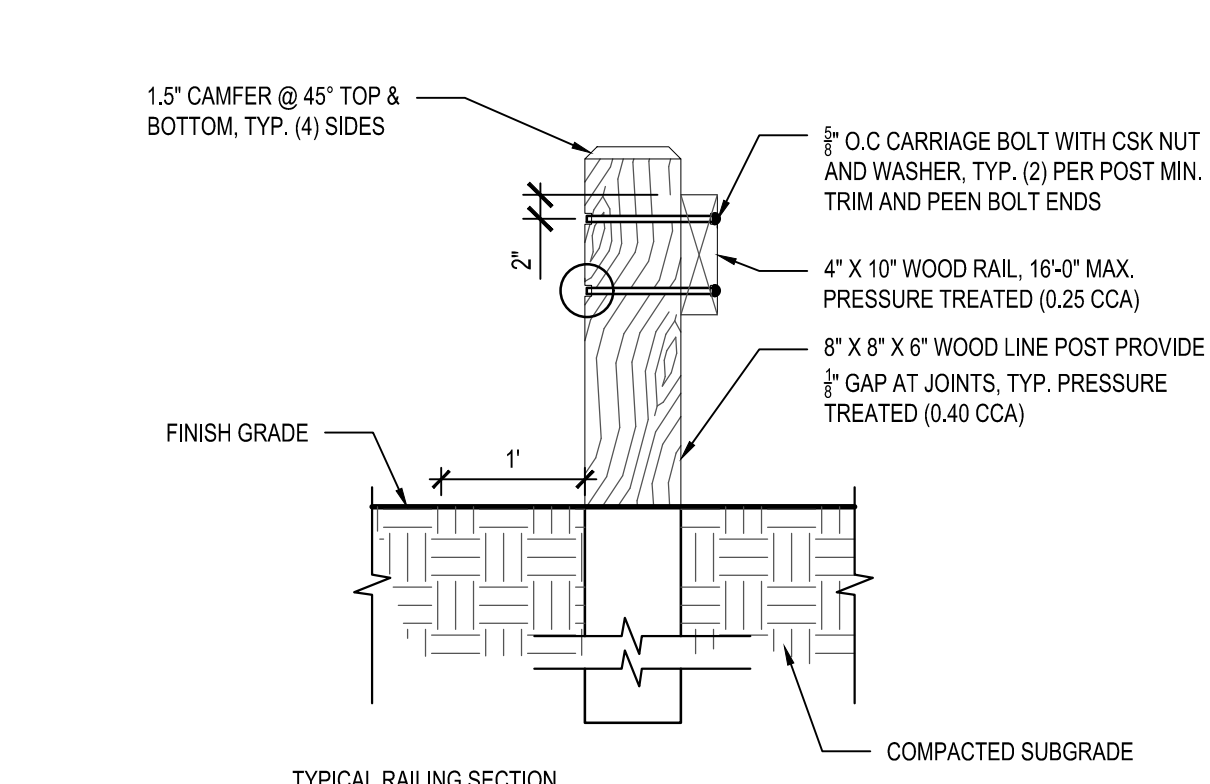


TYPICAL RAILING OPENING/ TERMINAL

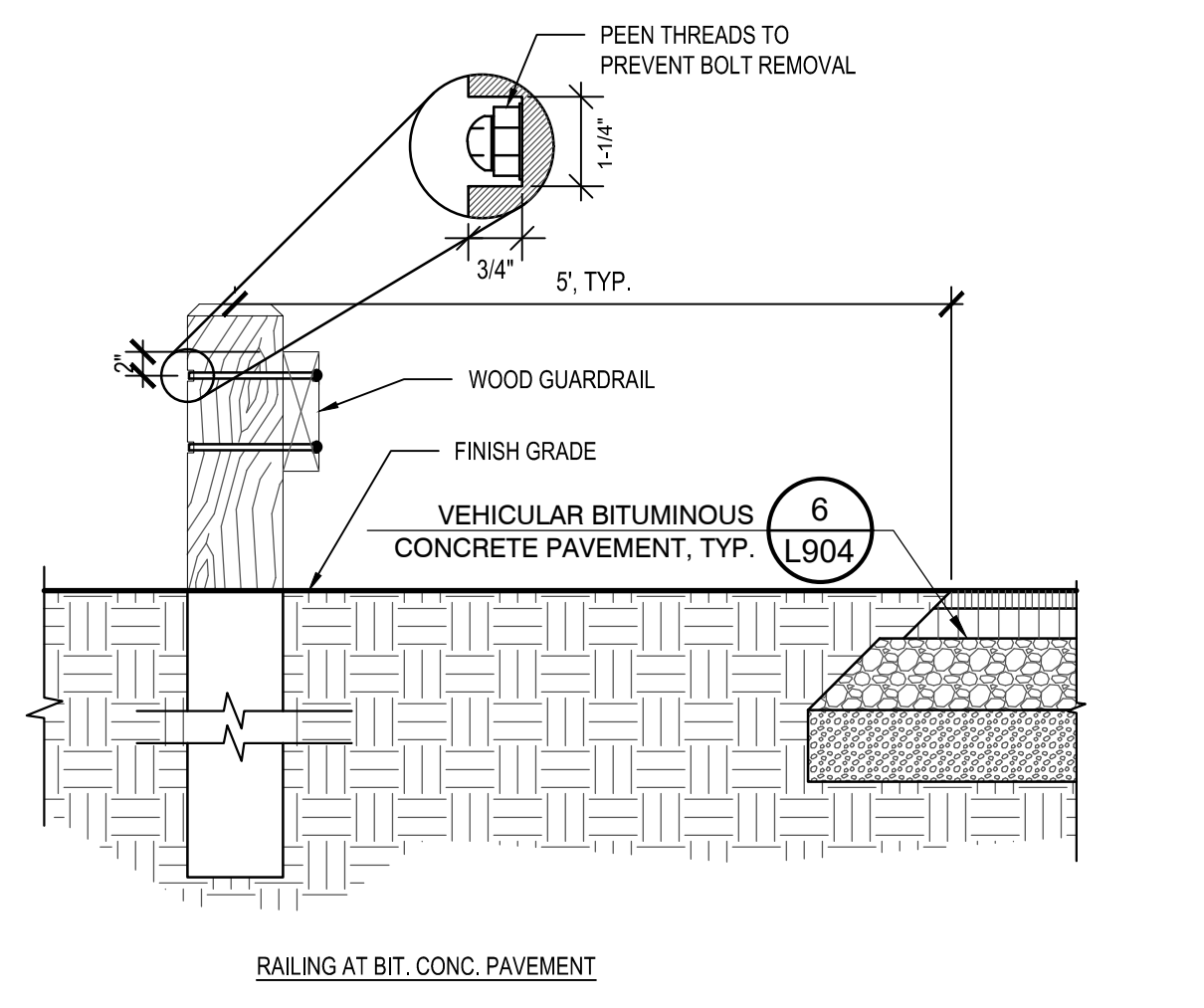


TYPICAL RAILING ELEVATION

1 **TIMBER GUIDERAIL**
 NOT TO SCALE

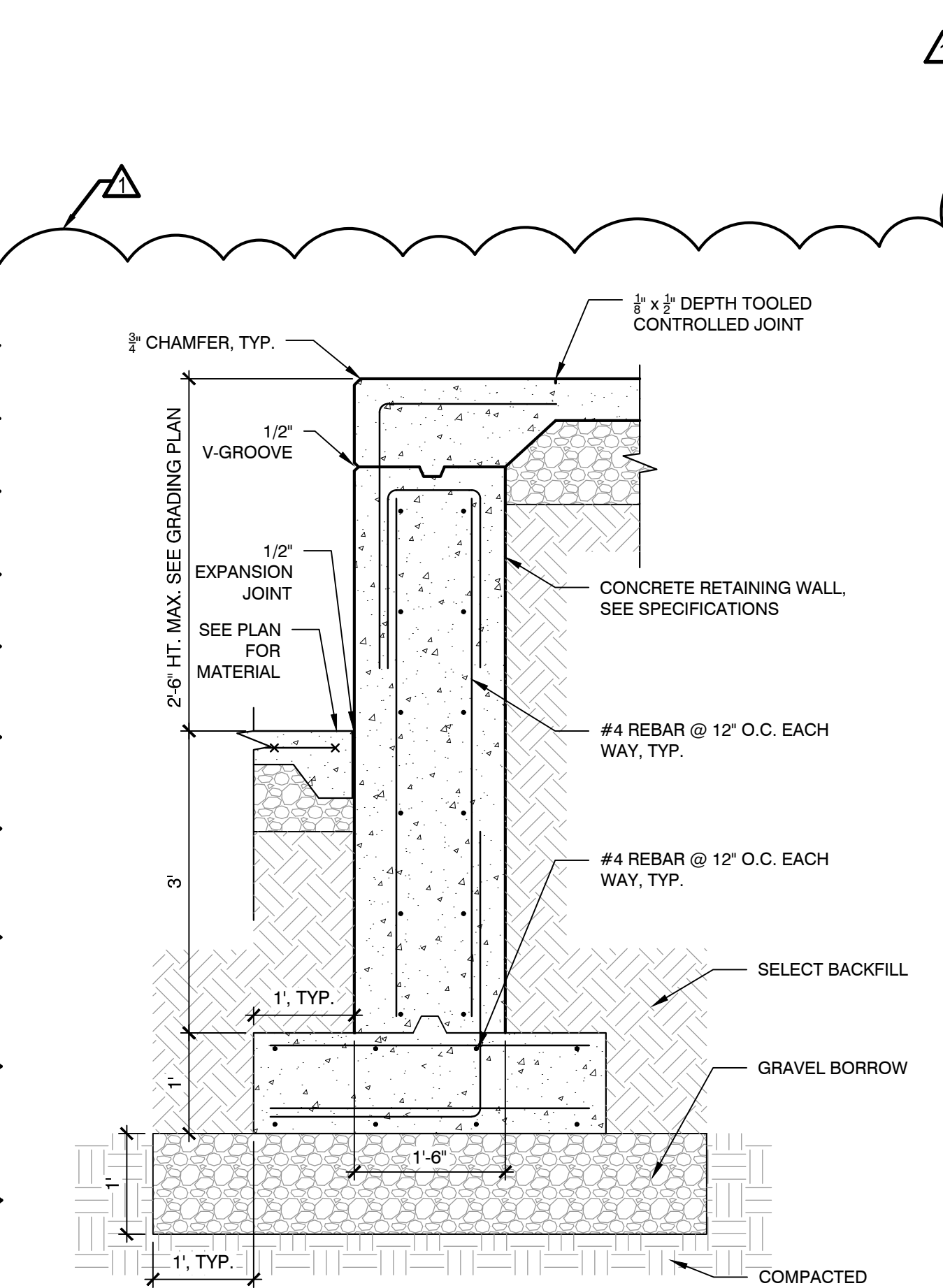


TYPICAL RAILING SECTION



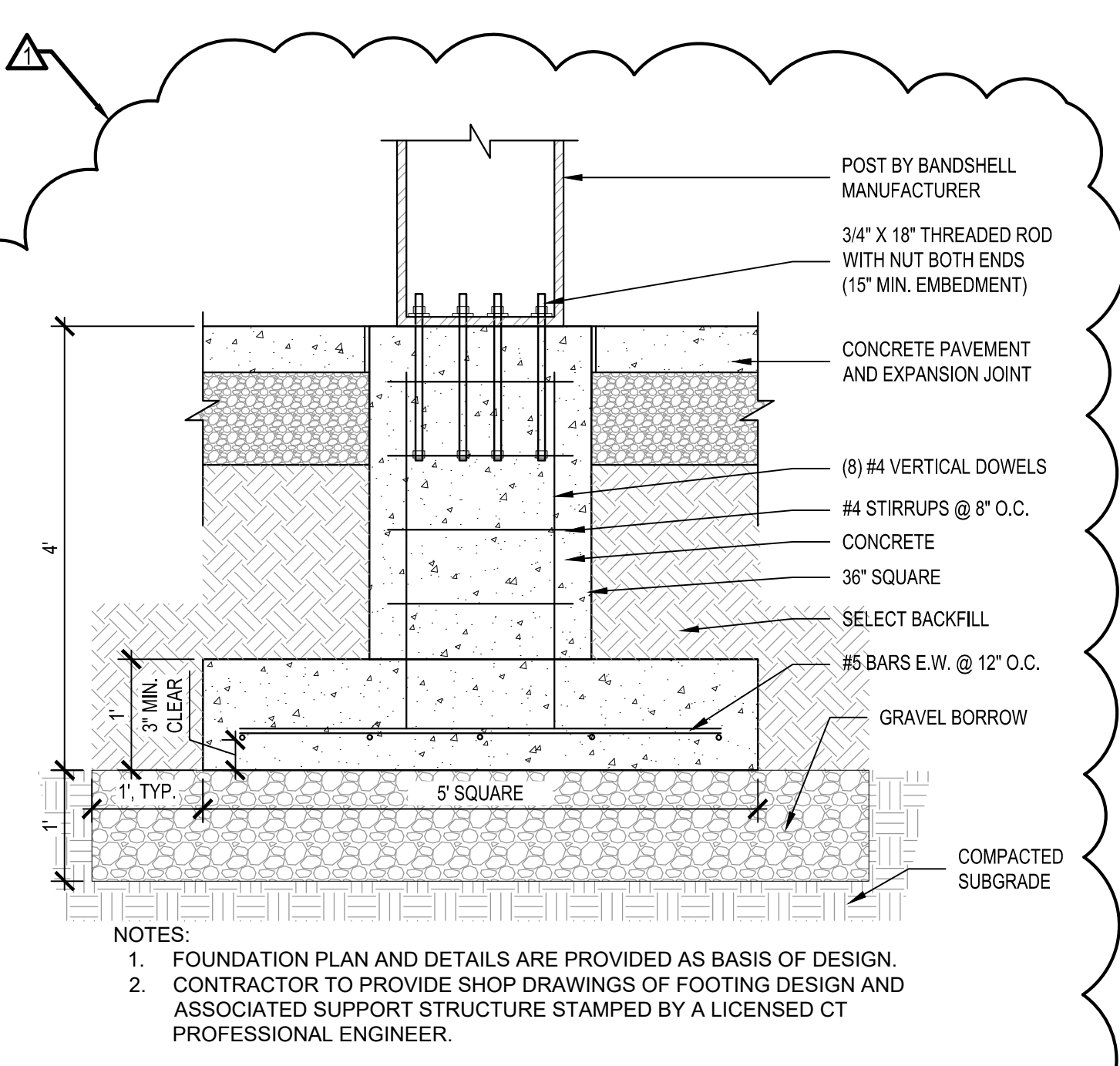
RAILING AT BIT. CONC. PAVEMENT

CT-BP-65



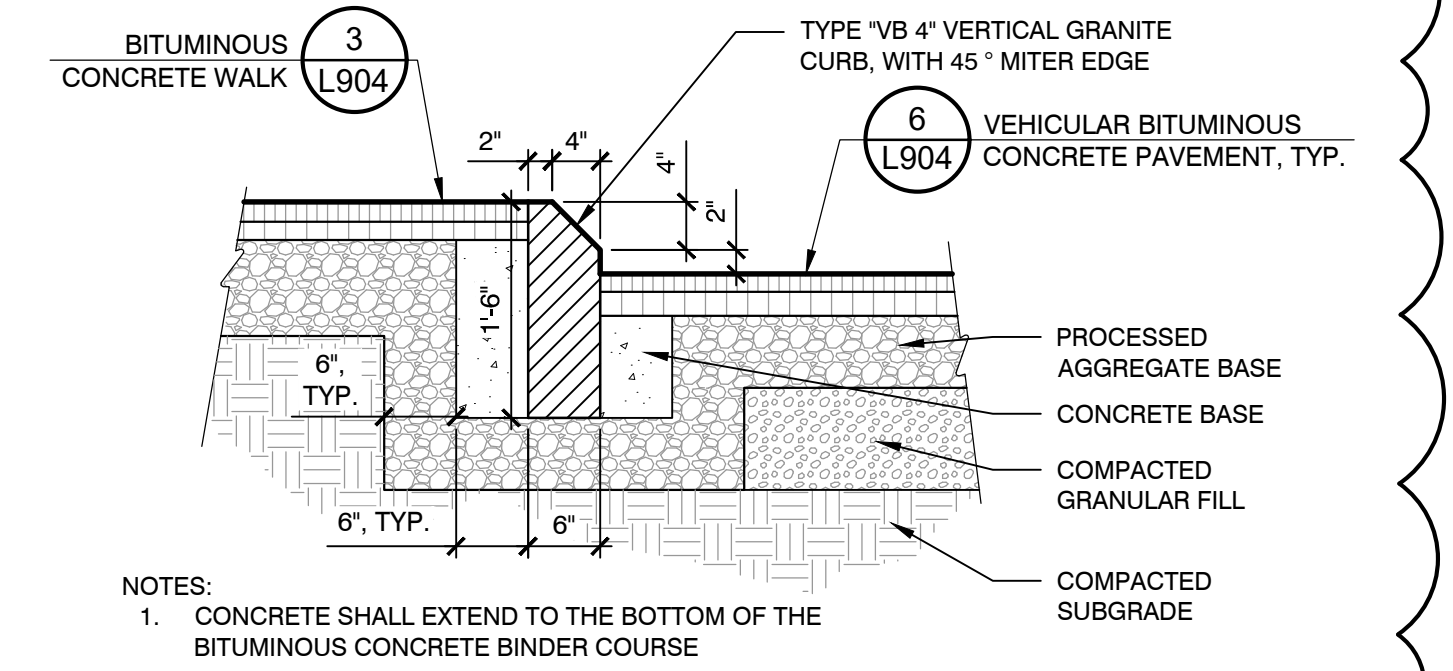
3 **CIP CONCRETE RETAINING WALL AT BANDSHELL**
 NOT TO SCALE

CT-BP-76



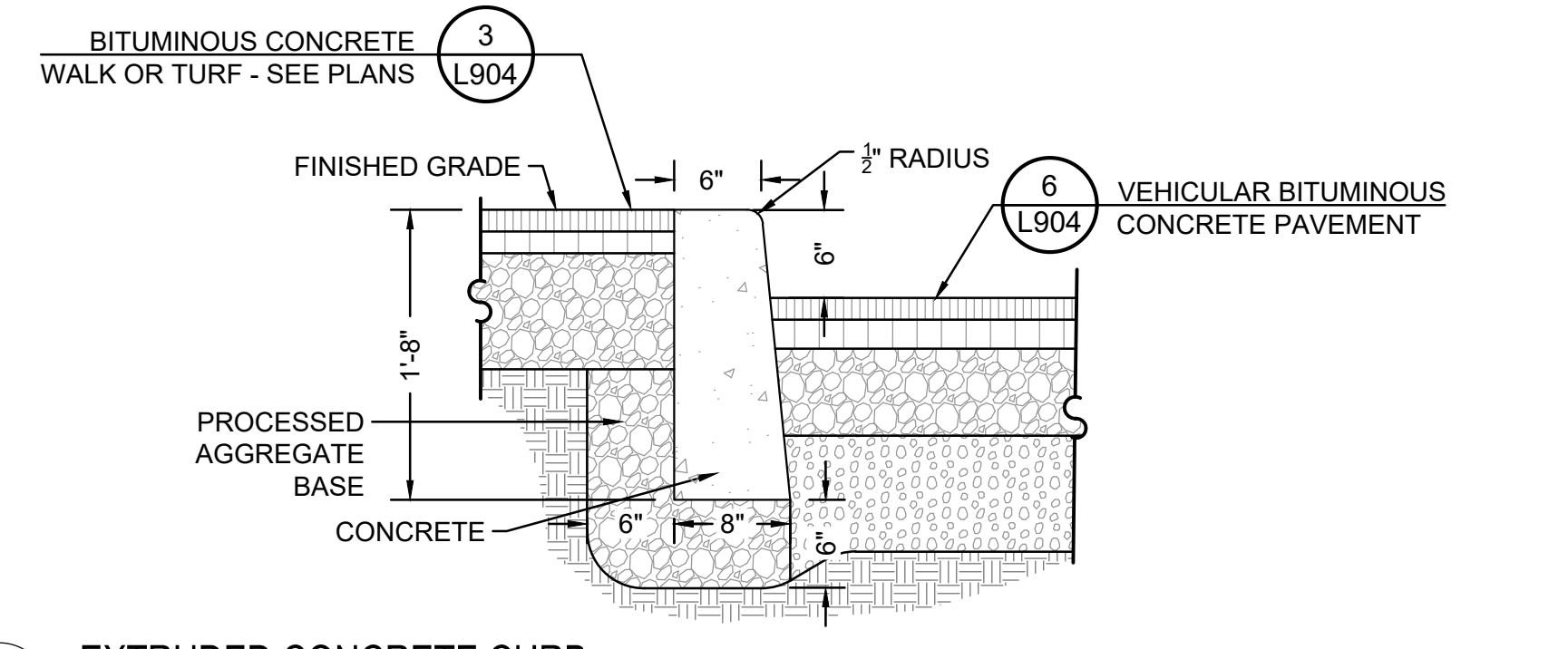
4 **POST FOOTING DETAIL**
 NOT TO SCALE

CT-BP-87



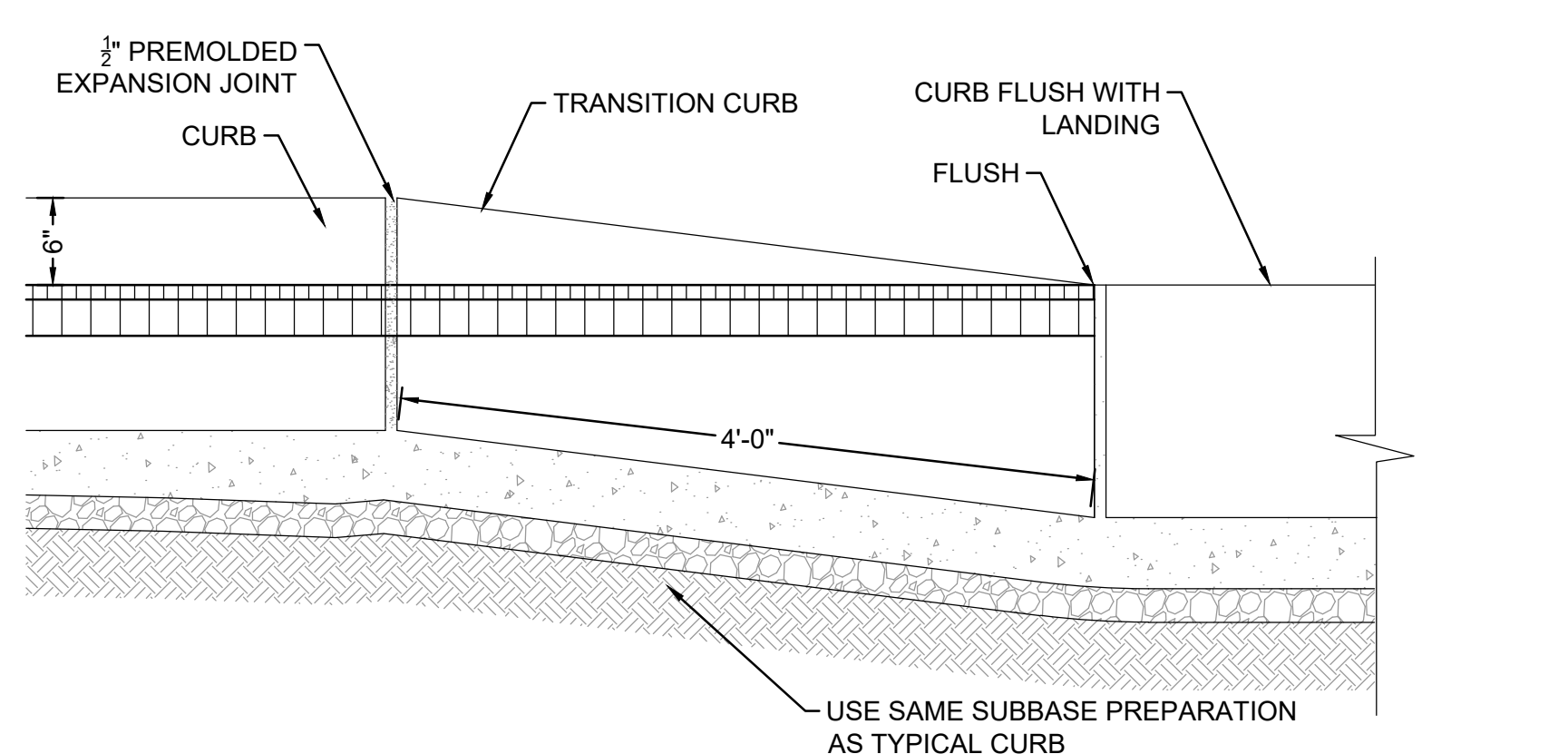
5 **MOUNTABLE CURB**
 NOT TO SCALE

CT-BP-77



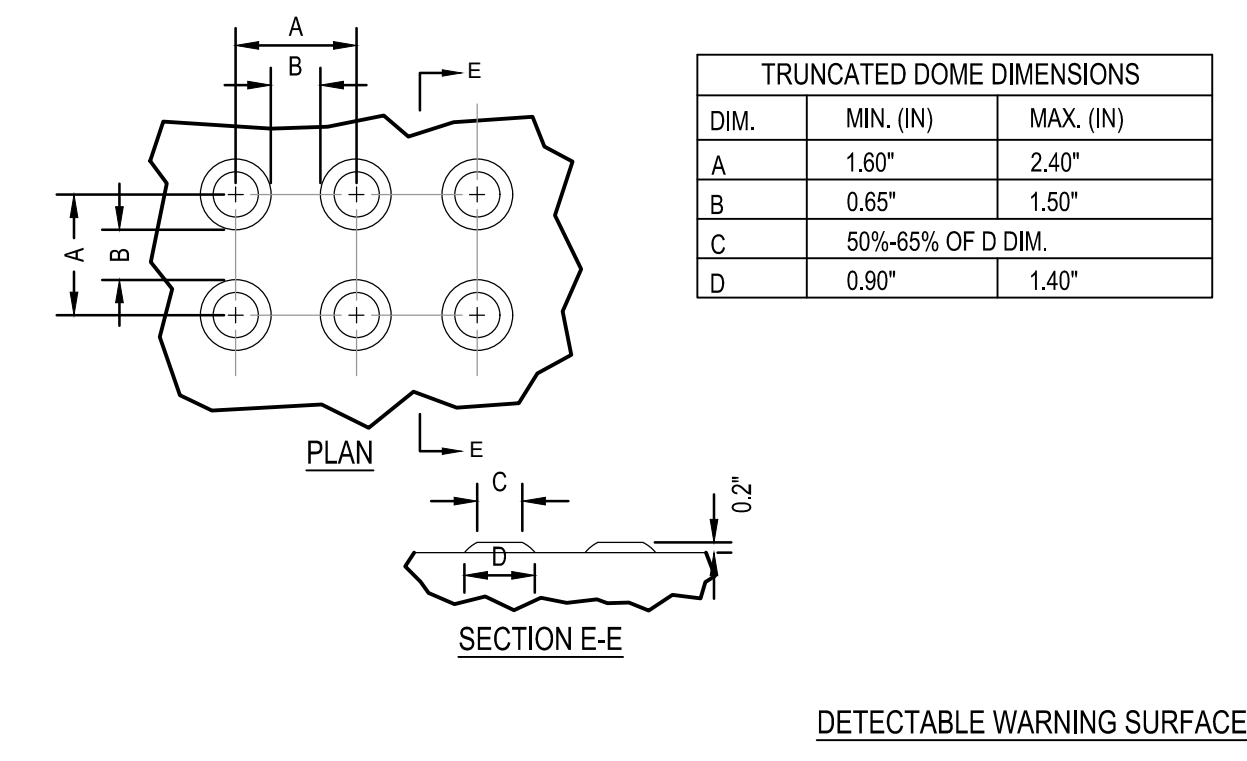
6 **EXTRUDED CONCRETE CURB**
 NOT TO SCALE

CT-BP-51

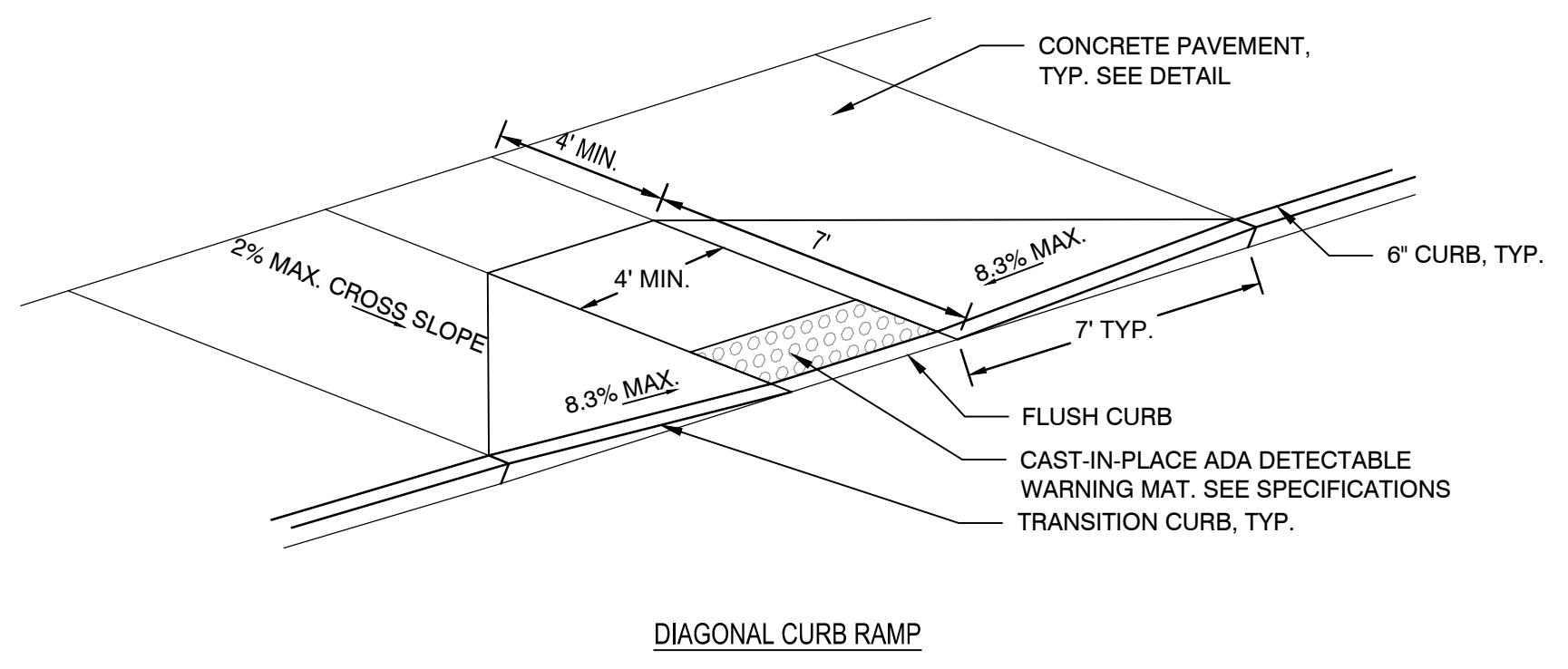


7 **CONCRETE TAPER CURB**
 NOT TO SCALE

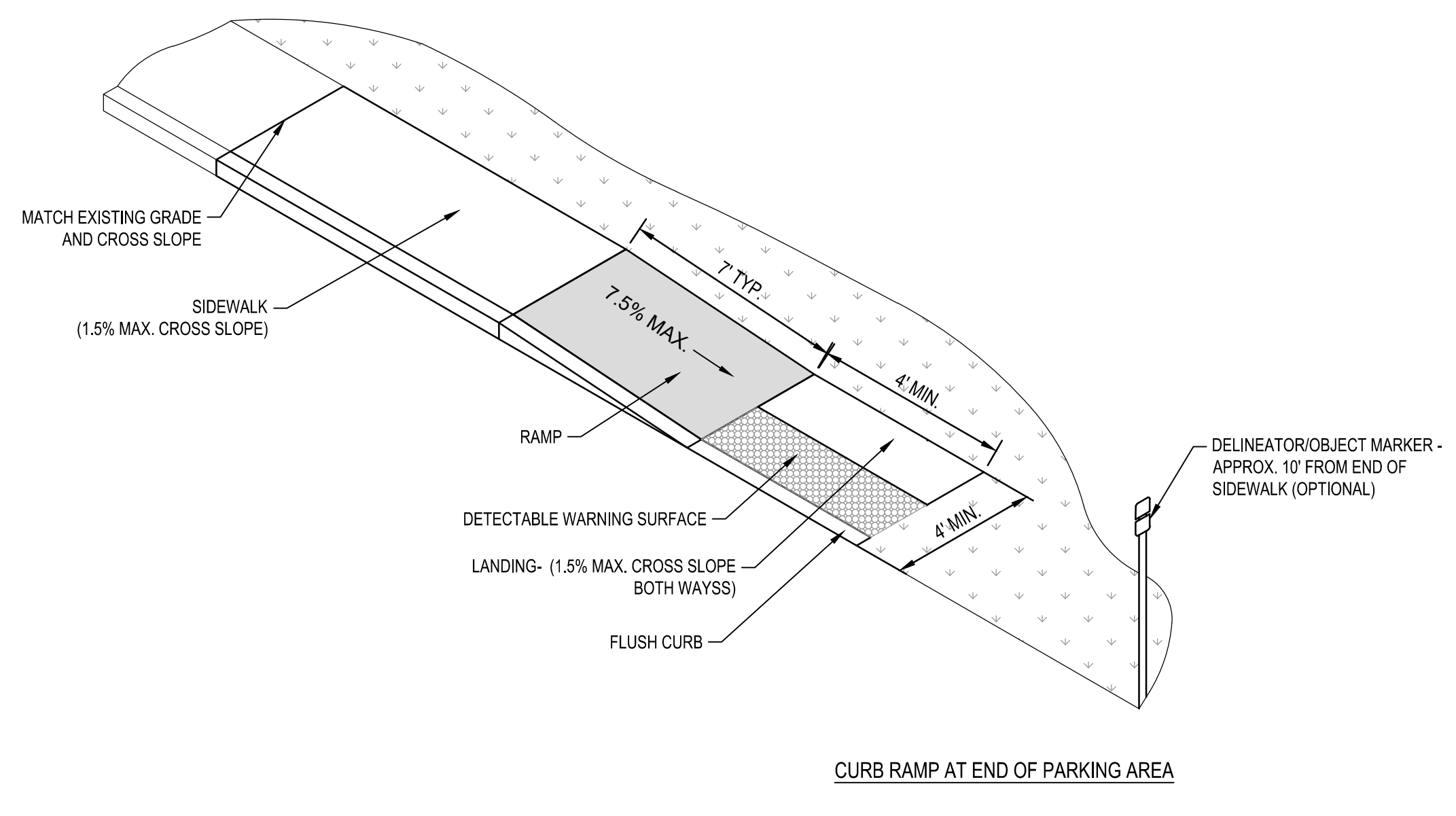
CT-BP-50



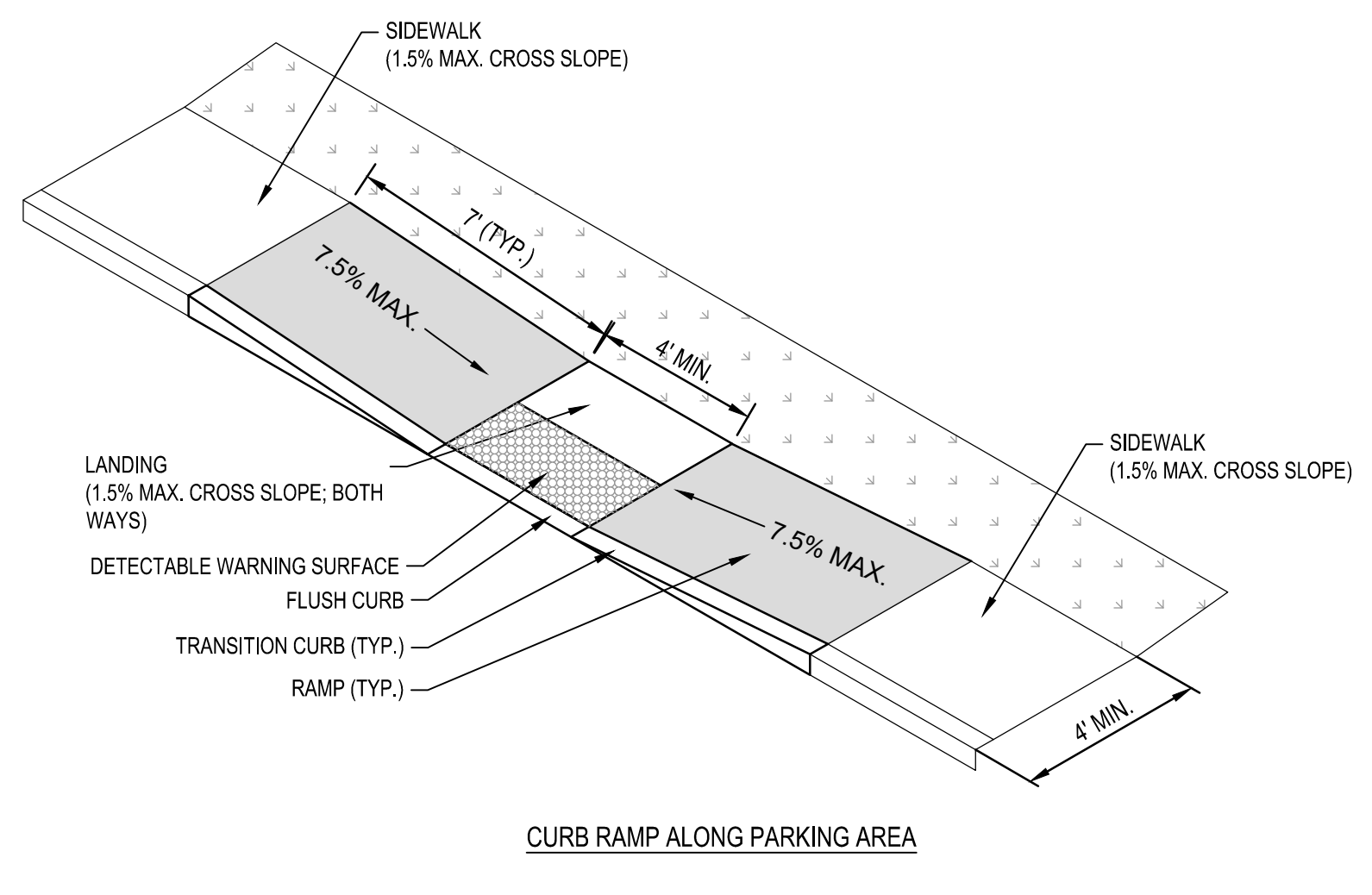
DETECTABLE WARNING SURFACE



DIAGONAL CURB RAMP



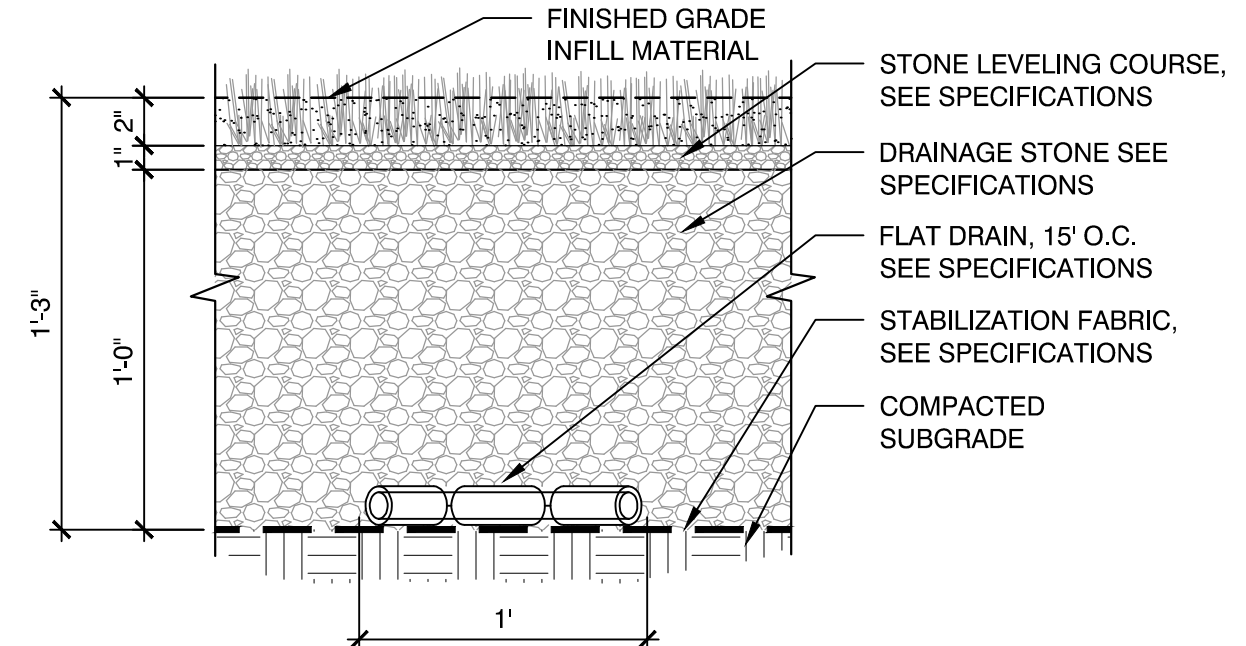
CURB RAMP AT END OF PARKING AREA



CURB RAMP ALONG PARKING AREA

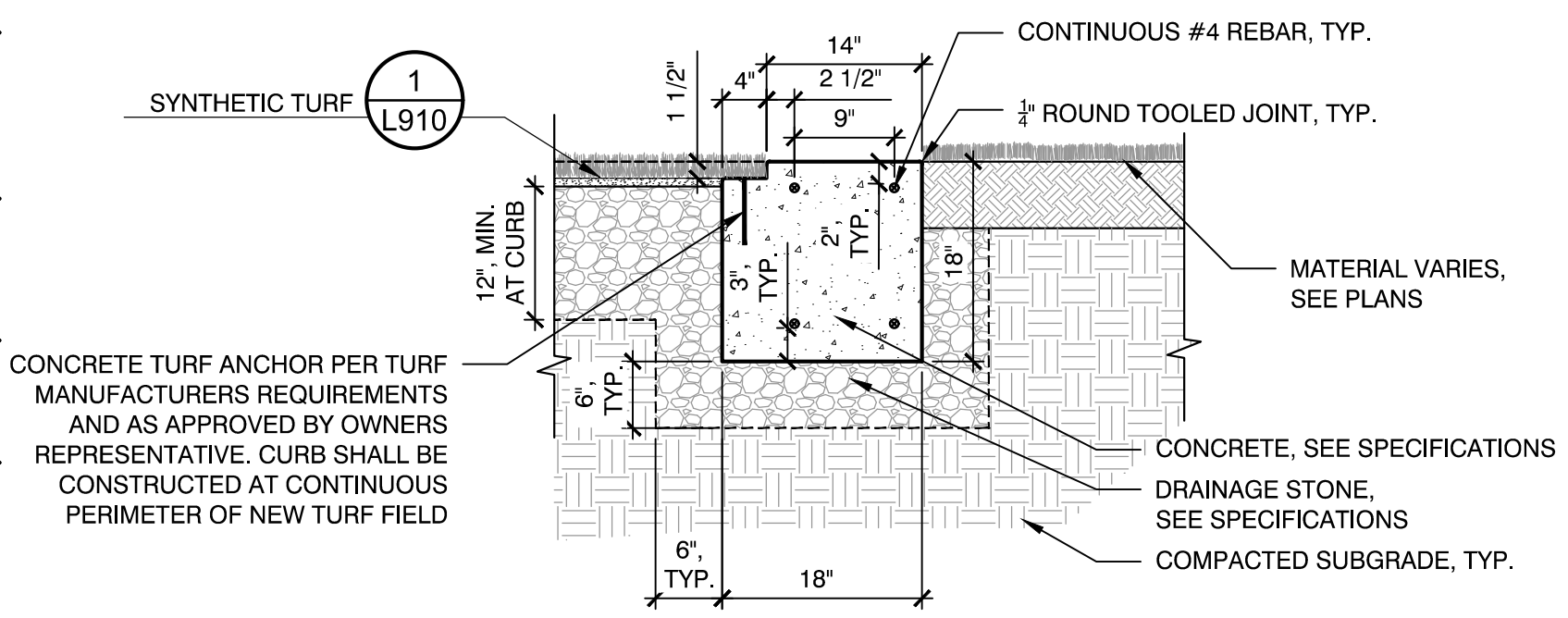
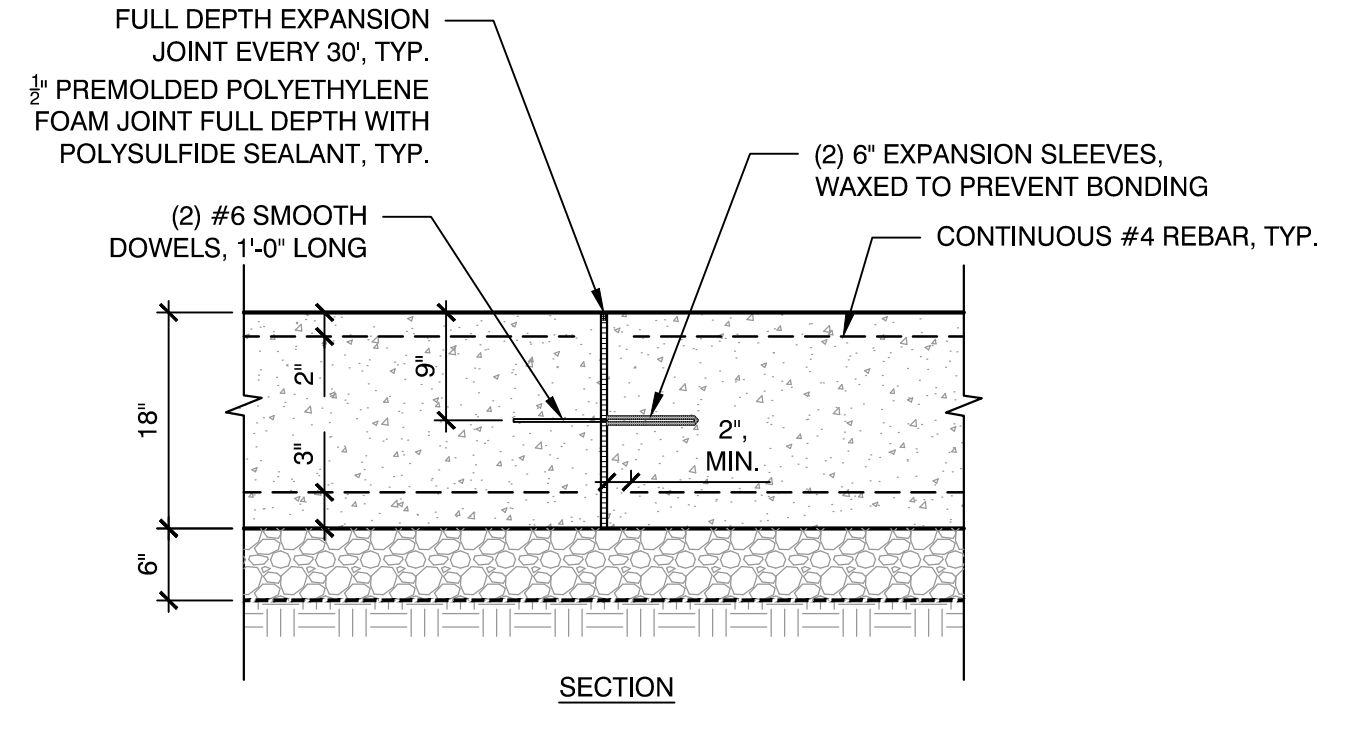
2 **CURB RAMP CONFIGURATIONS, TYP.**
 NOT TO SCALE

CT-BP-55



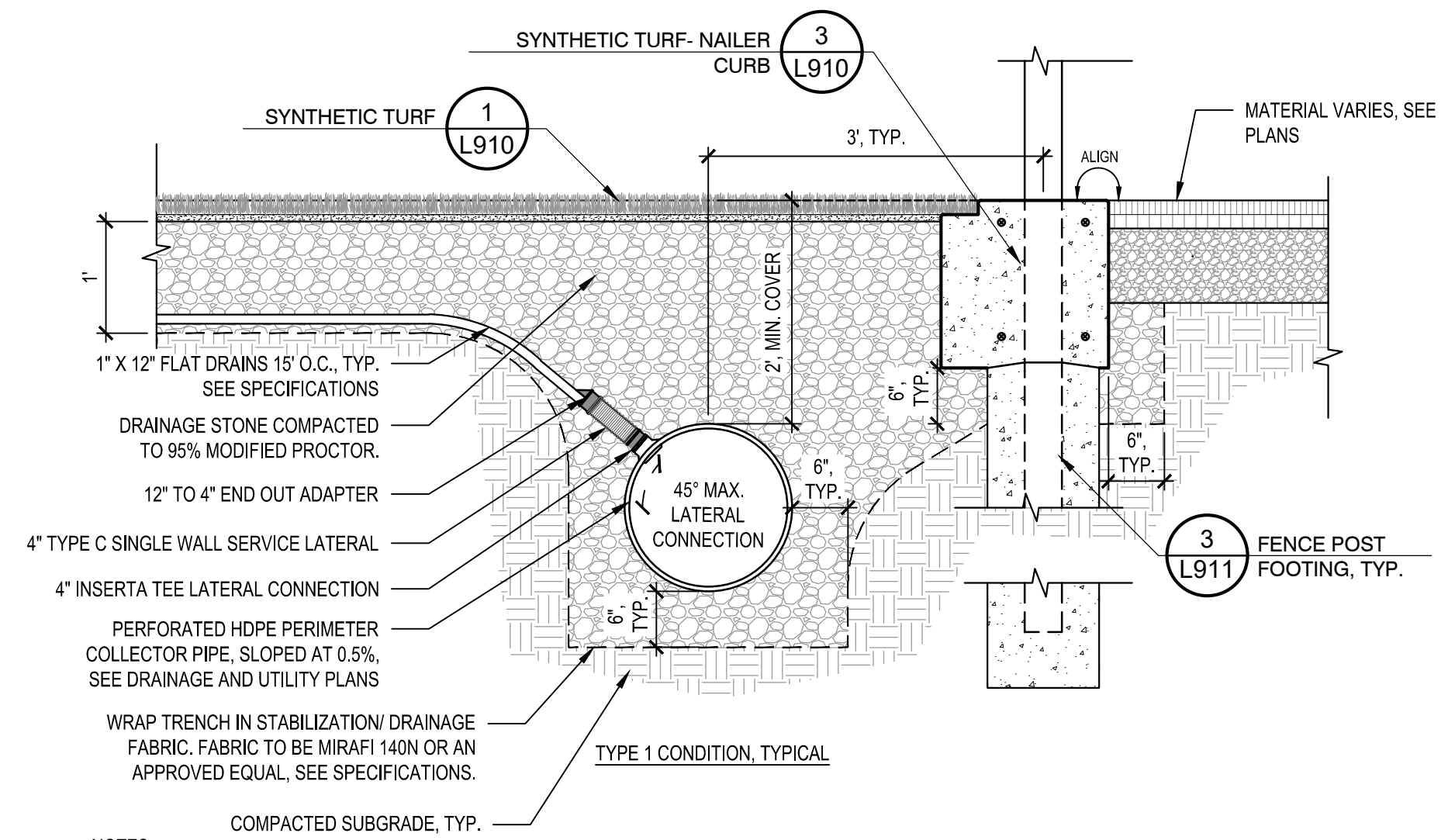
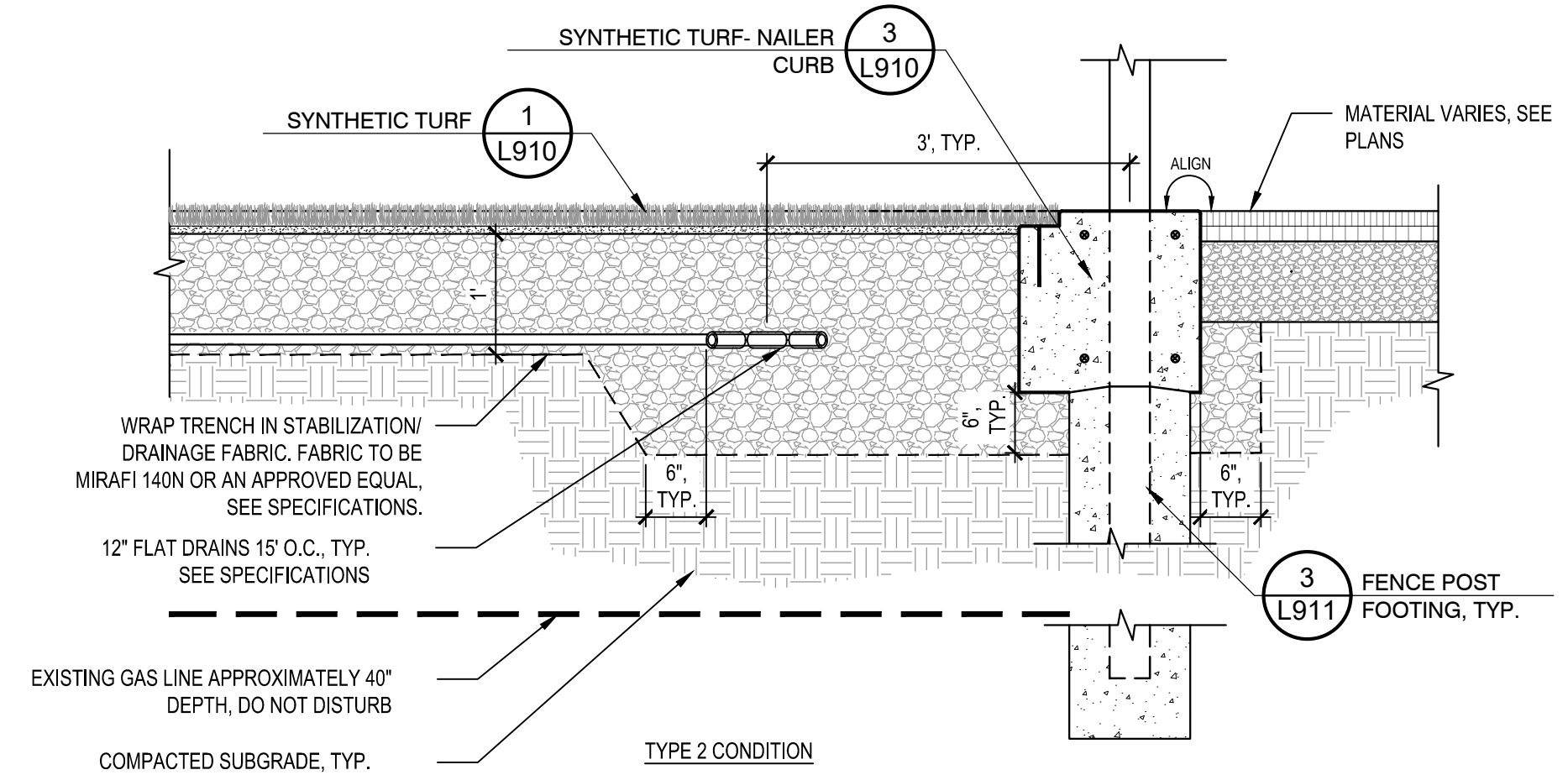
NOTES:
 1. SUBGRADE ELEVATIONS TO FOLLOW SAME SLOPE AS FINISHED SURFACE ELEVATIONS WITHIN TURF LIMITS.
 2. ABSOLUTELY NO SUBSTITUTIONS SHALL BE ALLOWED FOR BOTH THE STONE LEVELING COURSE AND DRAINAGE STONE WITHOUT A WRITTEN AND SIGNED DOCUMENT DIRECTLY FROM THE TURF MANUFACTURER. DOCUMENT SHALL STATE: THE MATERIAL IS AN ACCEPTABLE MATERIAL TO BE USED DIRECTLY UNDER THEIR TURF FIELD FABRIC AND THAT THE SUBSTITUTION MATERIAL PROVIDES THE SAME CHARACTERISTICS (DRAINAGE, STRUCTURAL INTEGRITY, PLAYABILITY, ETC.) AS THE MATERIALS SPECIFIED. FAILURE TO PROVIDE SUCH A DOCUMENT SHALL BE AT THE RISK AND COST OF THE CONTRACTOR.

1 SYNTHETIC TURF
 NOT TO SCALE CT-BP-41



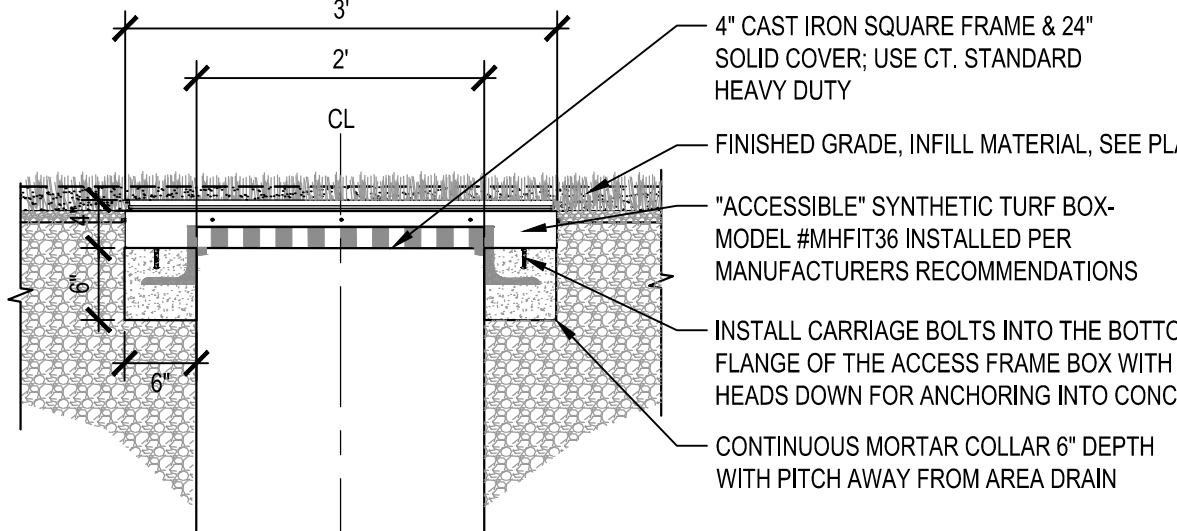
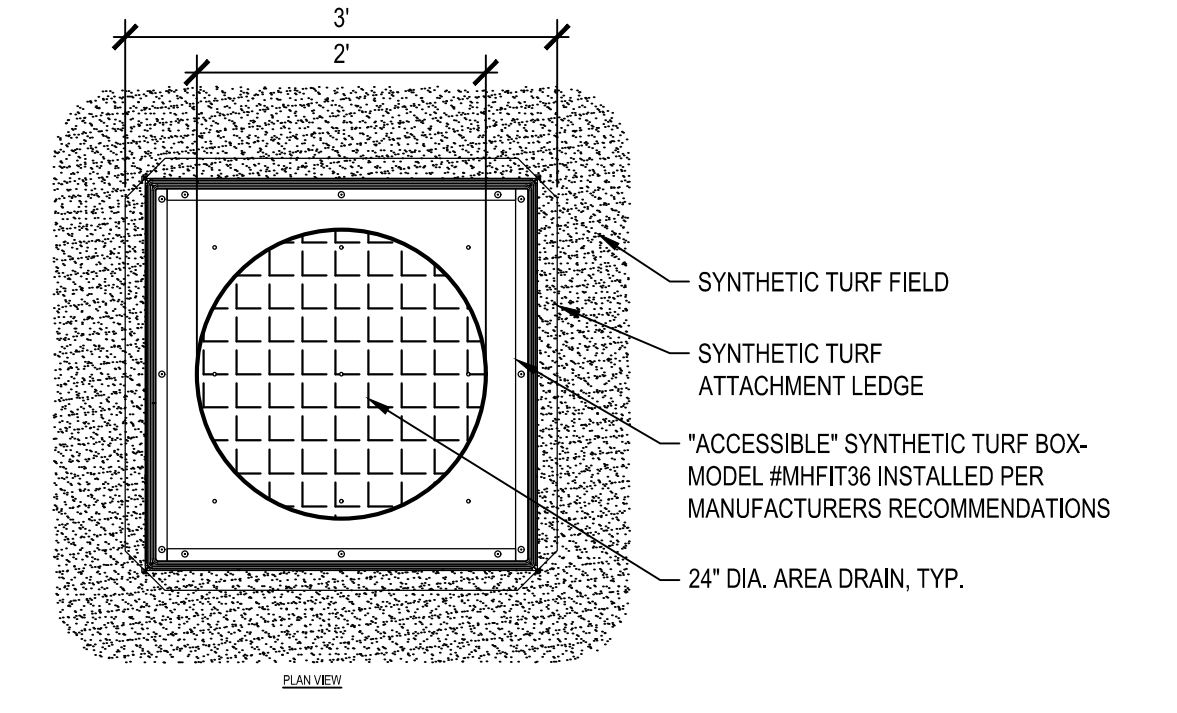
NOTES:
 1. CONTRACTOR TO PROVIDE EXPANSION JOINTS EVERY 30' O.C.

3 SYNTHETIC TURF- NAILER CURB
 NOT TO SCALE CT-BP-42



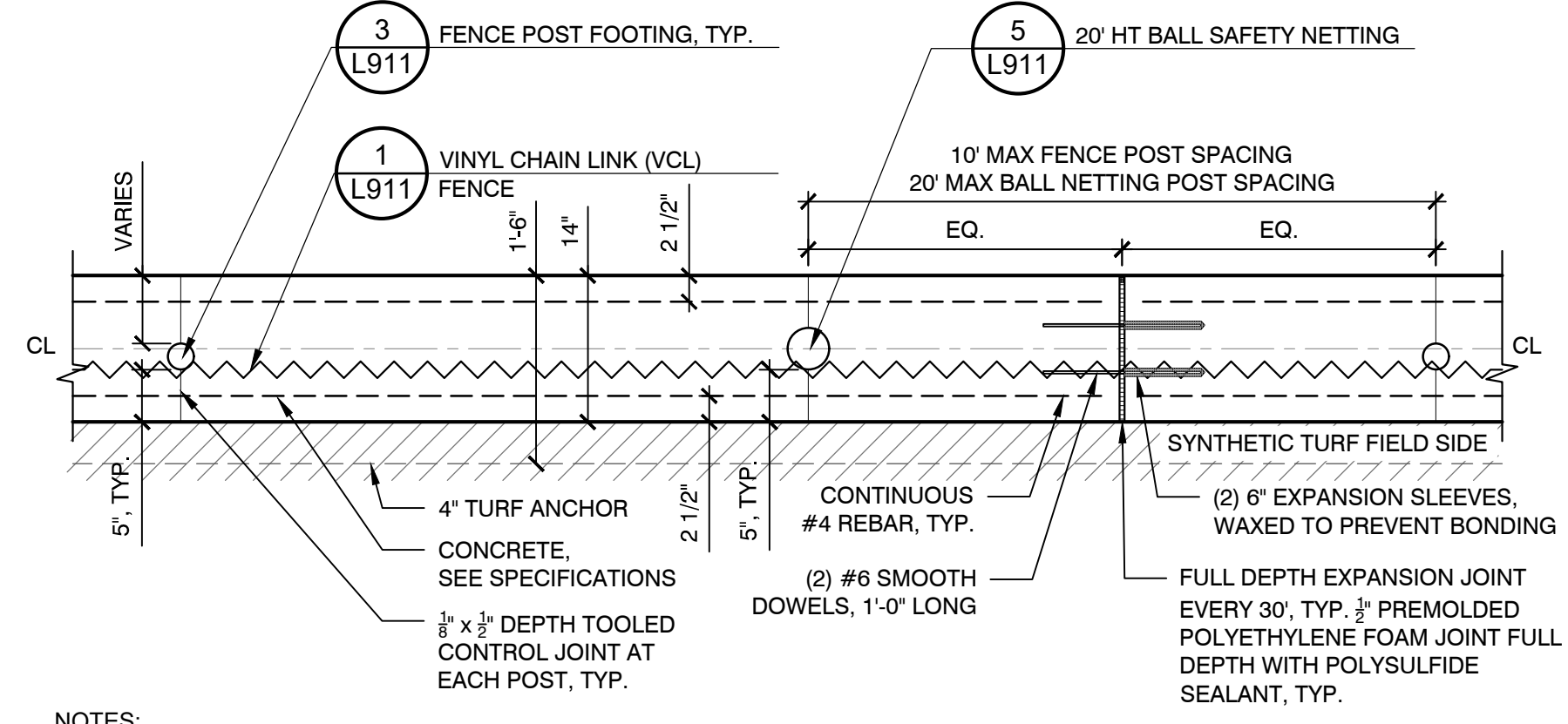
NOTES:
 1. FLAT DRAIN TO BE DIRECTLY CONNECTED TO PERIMETER DRAIN. PROVIDE MANUFACTURED FITTINGS TO MAKE THE CONNECTION AS REQUIRED AND APPROVED BY THE OWNERS REPRESENTATIVE.

2 COLLECTOR DRAIN
 NOT TO SCALE CT-BP-59

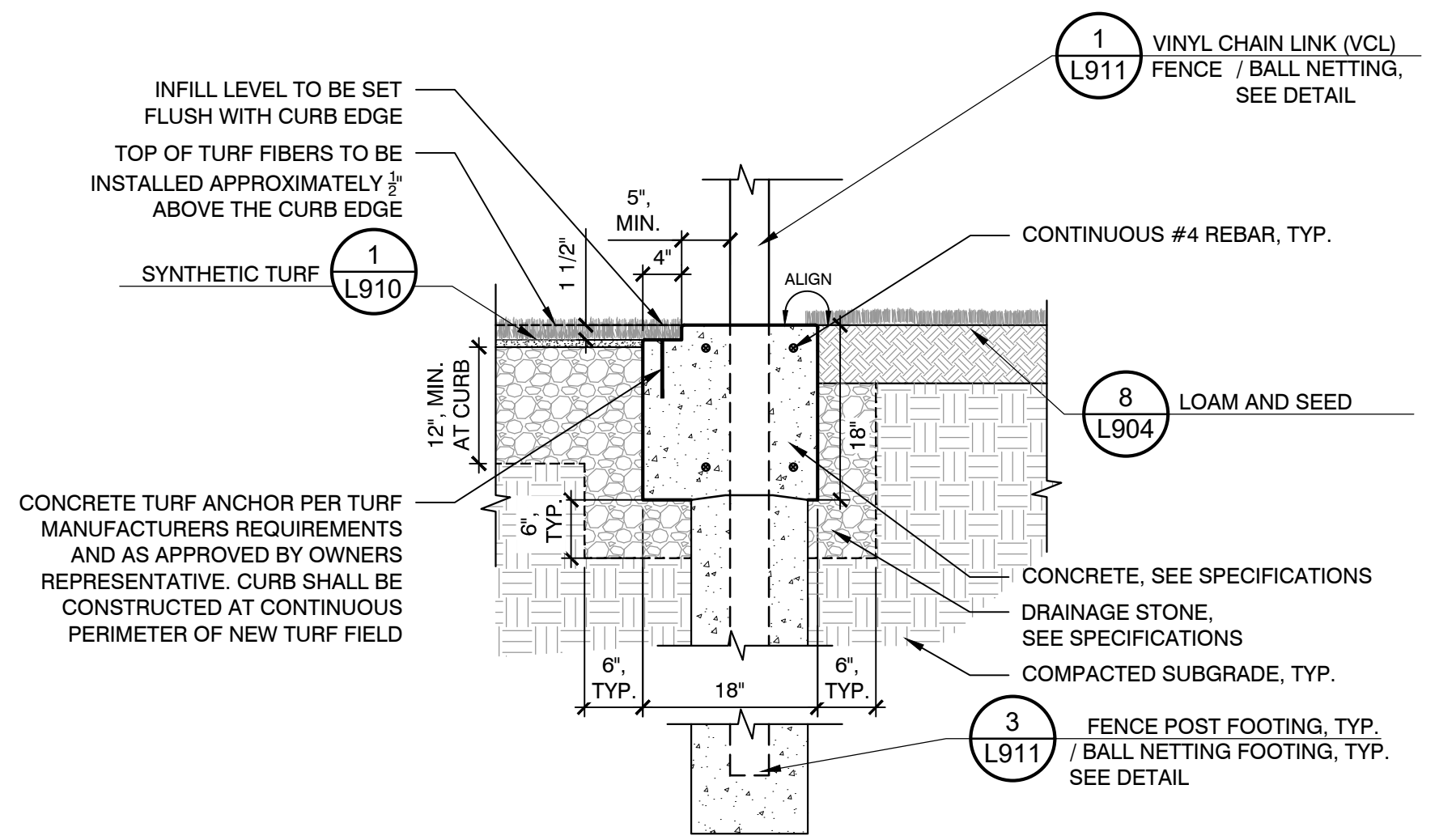
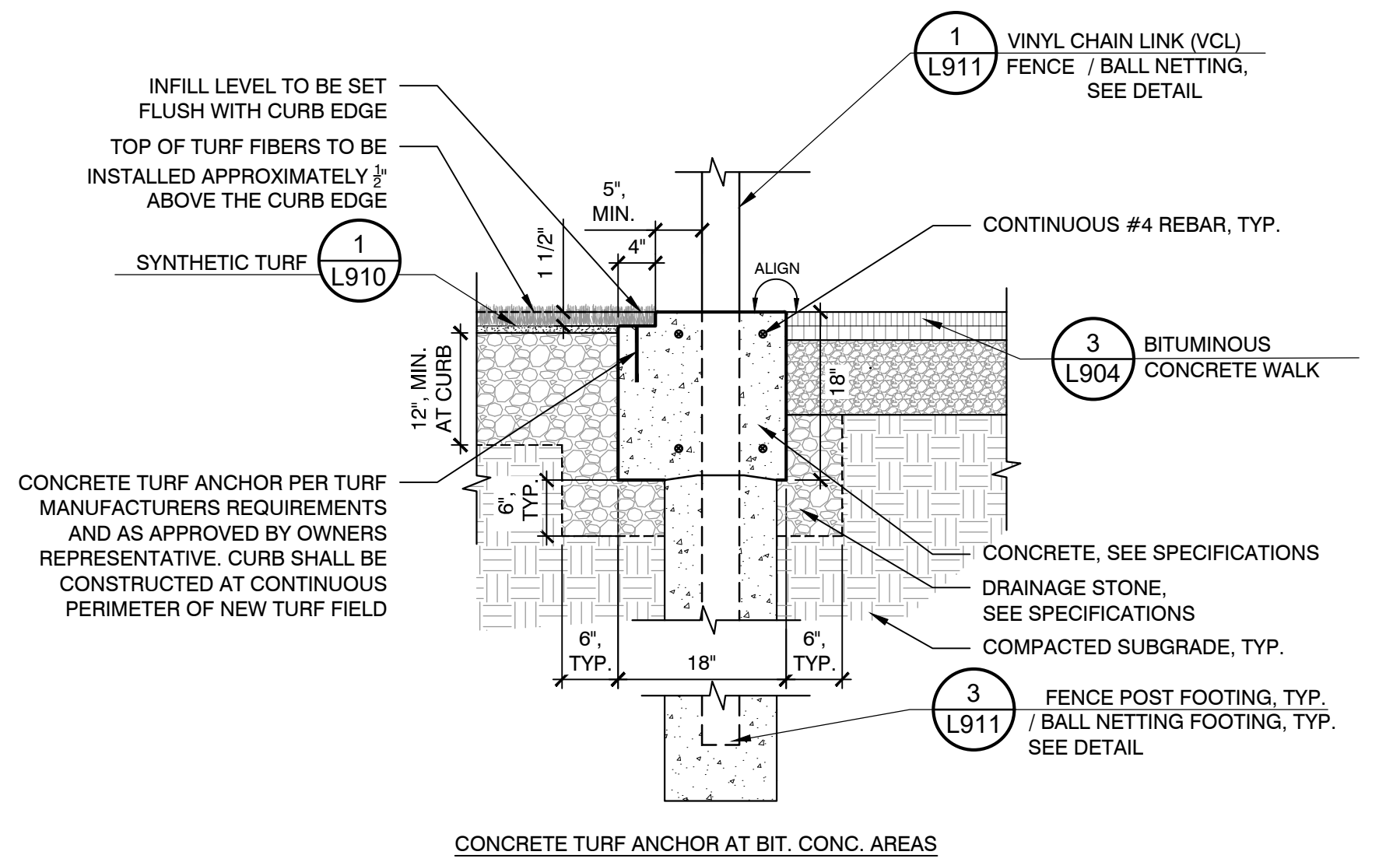


NOTES:
 1. SYNTHETIC TURF CAN BE CUT AND SECURED TO THE PROVIDED TURF ATTACHMENT LEDGE PER MANUFACTURERS DIRECTIONS
 2. CONTRACTOR SHALL CONFIRM SIZE AND EXACT MODEL NUMBER WITH MANUFACTURER PRIOR TO ORDERING

4 SYNTHETIC TURF BOX COVER
 NOT TO SCALE CT-BP-69



NOTES:
 1. CONTRACTOR SHALL INSTALL FENCE POST AND BALL NETTING POST IN LINE WITH EACH OTHER WHILE MAINTAINING A 5" MINIMUM DISTANCE FROM FIELD SIDE EDGE OF CURB



NOTES:
 1. CONTRACTOR TO PROVIDE 1/2" x 3/8" DEPTH TOOLED CONTROL JOINTS AT EACH POST.
 2. CONTRACTOR TO PROVIDE EXPANSION JOINTS EVERY 30' O.C.

5 SYNTHETIC TURF- NAILER CURB AT POSTS
 NOT TO SCALE CT-BP-89

Consultants:

Revisions:		
No.	Date	Description
1	2/03/23	REVISED

COA:

Seal:

Issued For:
 BID DOCUMENTS

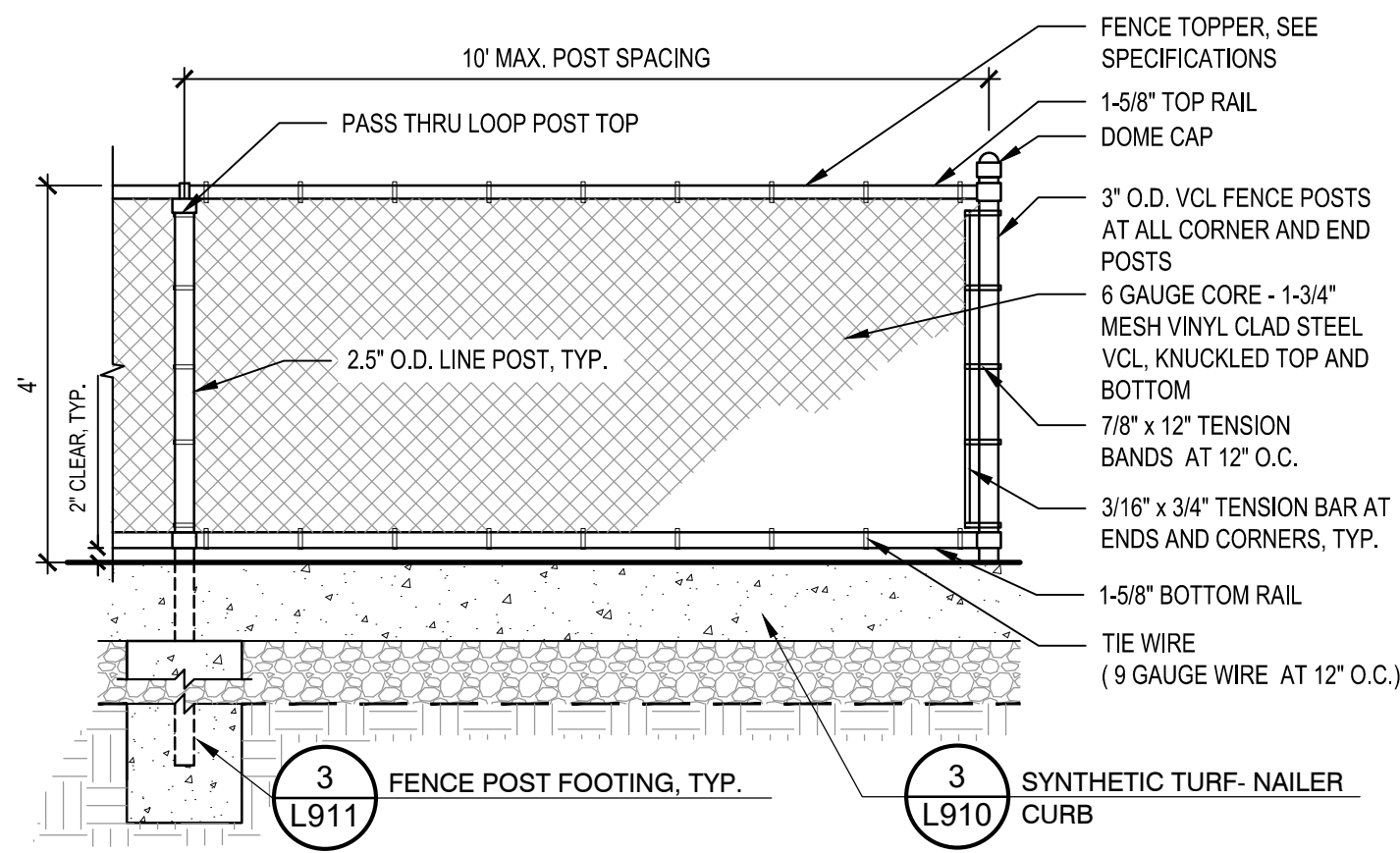
Scale: N.T.S.

Date: 1/11/2023
 Drawn By: --
 Reviewed By: --
 Approved By: --

W&S Project No.: ENG22 - 0258
 W&S File No.:

Drawing Title:
SITE CONSTRUCTION DETAILS

Sheet Number:
L910

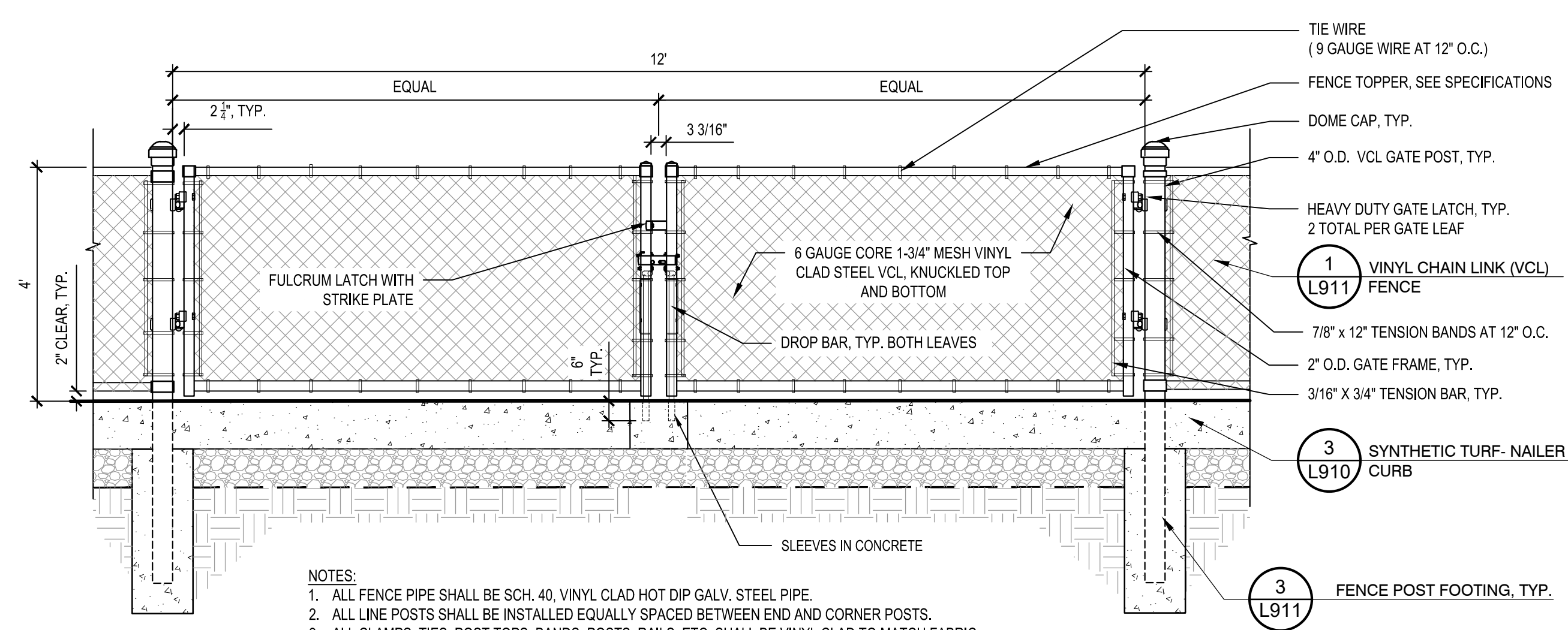


- NOTES:
1. ALL FENCE PIPE SHALL BE SCH. 40, VINYL CLAD HOT DIP GALV. STEEL PIPE.
 2. ALL LINE POSTS SHALL BE INSTALLED EQUALLY SPACED BETWEEN END AND CORNER POSTS.
 3. ALL CLAMPS, TIES, POST TOPS, BANDS, POSTS, RAILS, ETC. SHALL BE VINYL CLAD TO MATCH FABRIC.
 4. ALL FENCING SHALL INCLUDE FENCE TOPPER, SEE SPECIFICATIONS

1 VINYL CHAIN LINK (VCL) FENCE

NOT TO SCALE

CT-BP-44

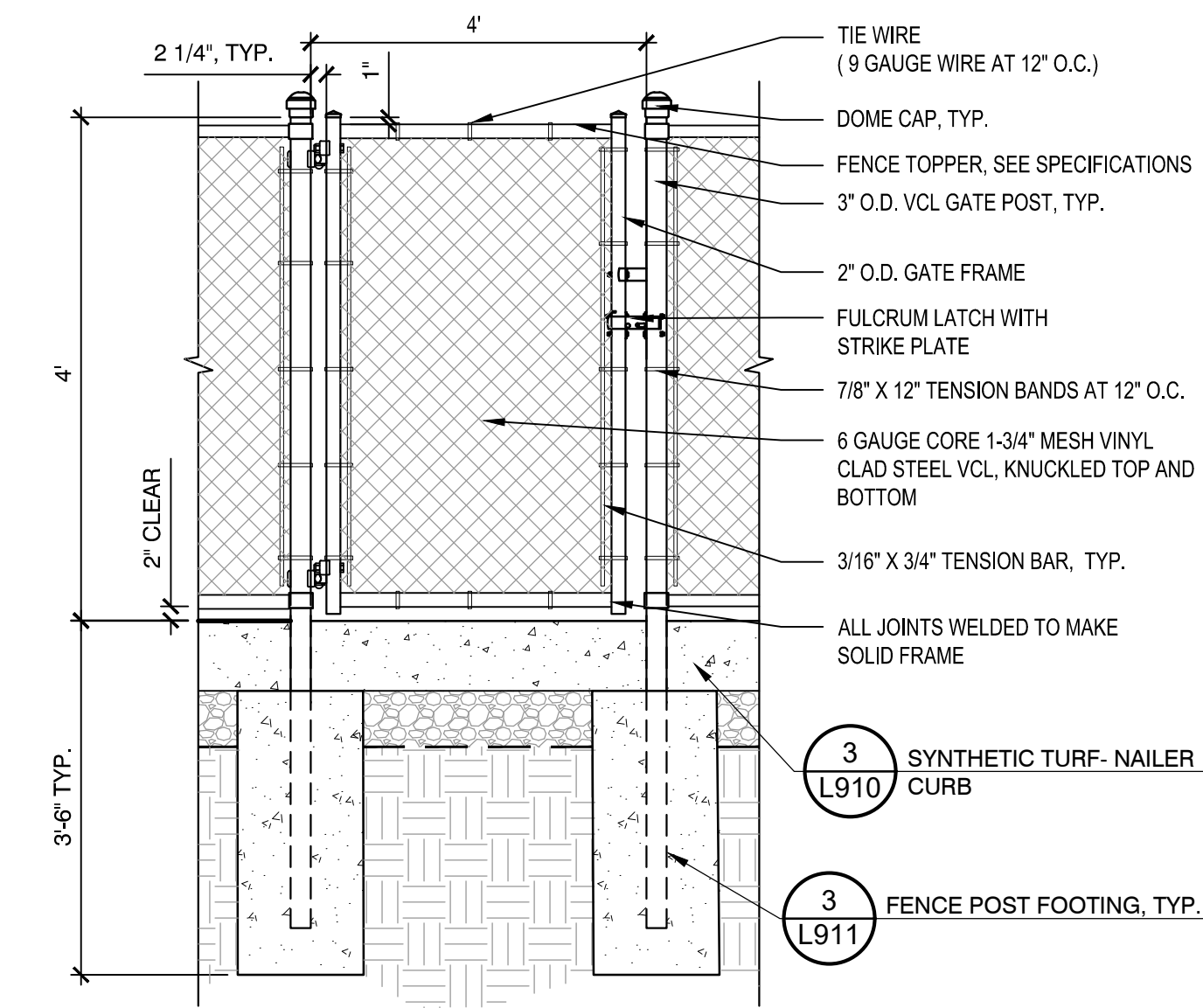


- NOTES:
1. ALL FENCE PIPE SHALL BE SCH. 40, VINYL CLAD HOT DIP GALV. STEEL PIPE.
 2. ALL LINE POSTS SHALL BE INSTALLED EQUALLY SPACED BETWEEN END AND CORNER POSTS.
 3. ALL CLAMPS, TIES, POST TOPS, BANDS, POSTS, RAILS, ETC. SHALL BE VINYL CLAD TO MATCH FABRIC.
 4. ALL GATES SHALL INCLUDE FENCE TOPPER, SEE SPECIFICATIONS

4 VINYL CHAIN LINK (VCL) FENCE, DOUBLE SWING GATE

NOT TO SCALE

CT-BP-16

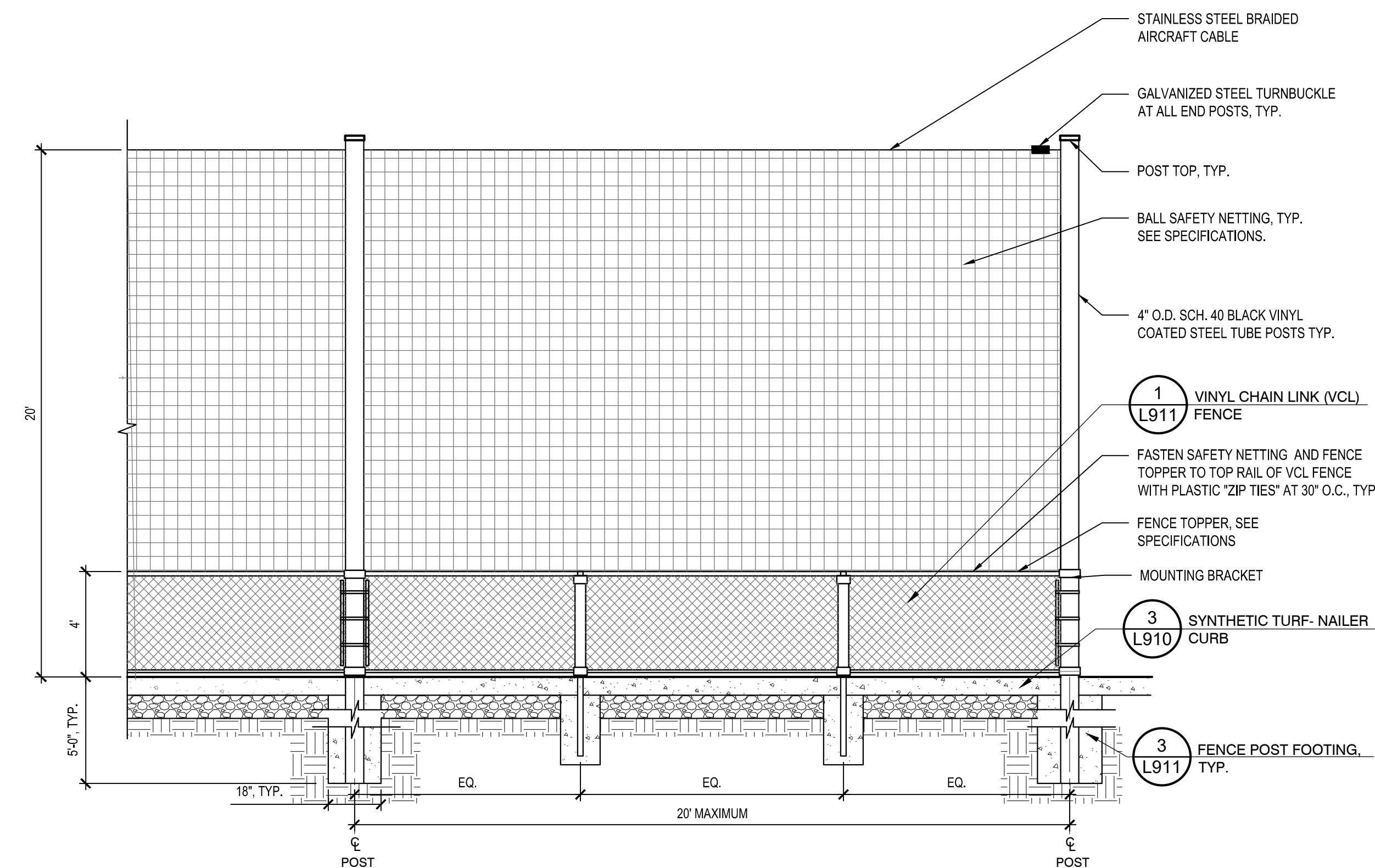


- NOTES:
1. ALL FENCE PIPE SHALL BE SCH. 40, VINYL CLAD HOT DIP GALV. STEEL PIPE.
 2. ALL LINE POSTS SHALL BE INSTALLED EQUALLY SPACED BETWEEN END AND CORNER POSTS.
 3. ALL CLAMPS, TIES, POST TOPS, BANDS, POSTS, RAILS, ETC. SHALL BE VINYL CLAD TO MATCH FABRIC.
 4. CONTRACTOR SHALL GRADE AS REQUIRED (BELOW GATE) TO ALLOW FOR FULL OPENING/CLOSING OF GATE.
 5. ALL GATES SHALL INCLUDE FENCE TOPPER, SEE SPECIFICATIONS

2 VINYL CHAIN LINK (VCL) FENCE SINGLE SWING GATE

NOT TO SCALE

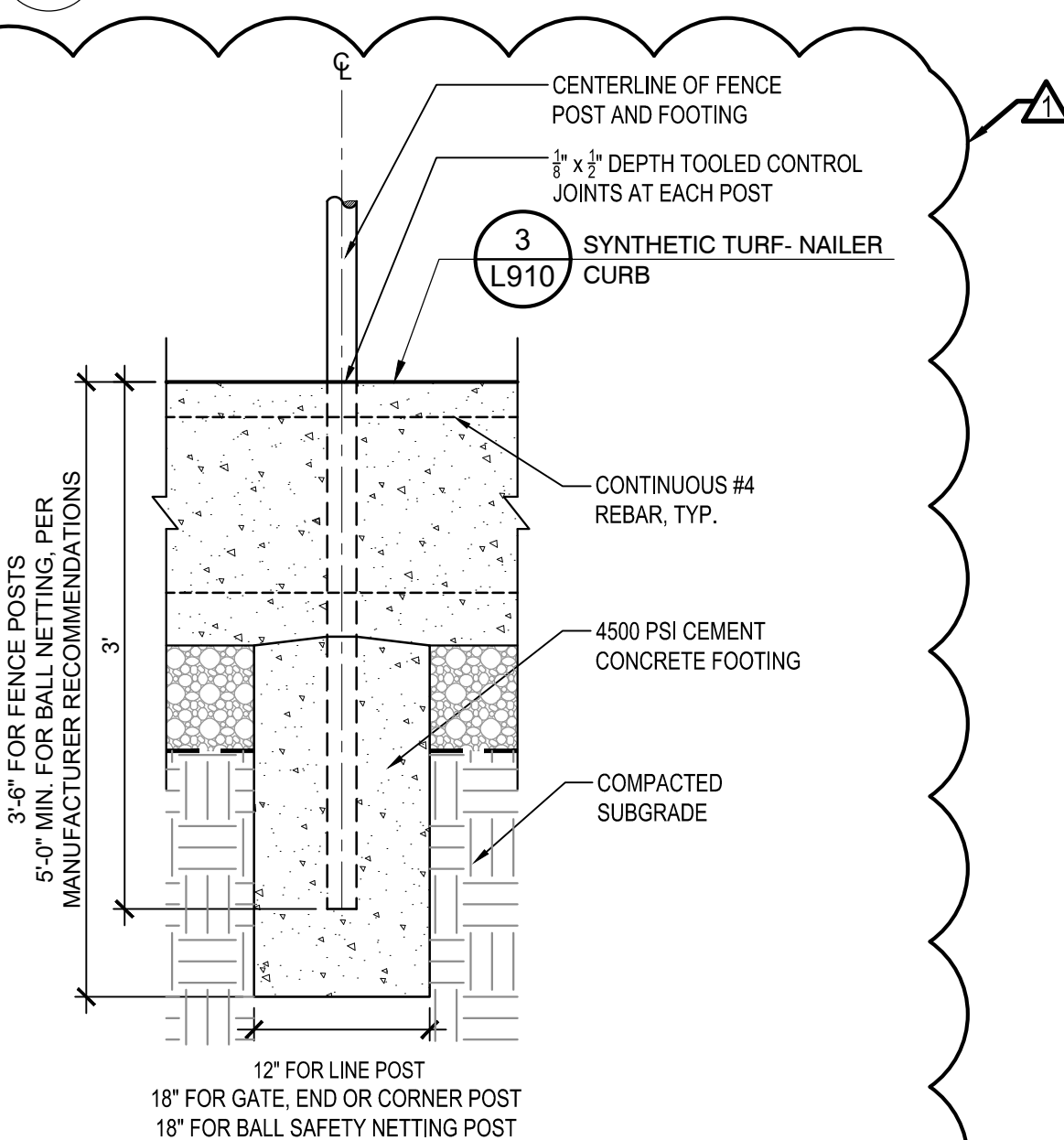
CT-BP-45



5 20' HT BALL SAFETY NETTING

NOT TO SCALE

CT-BP-61

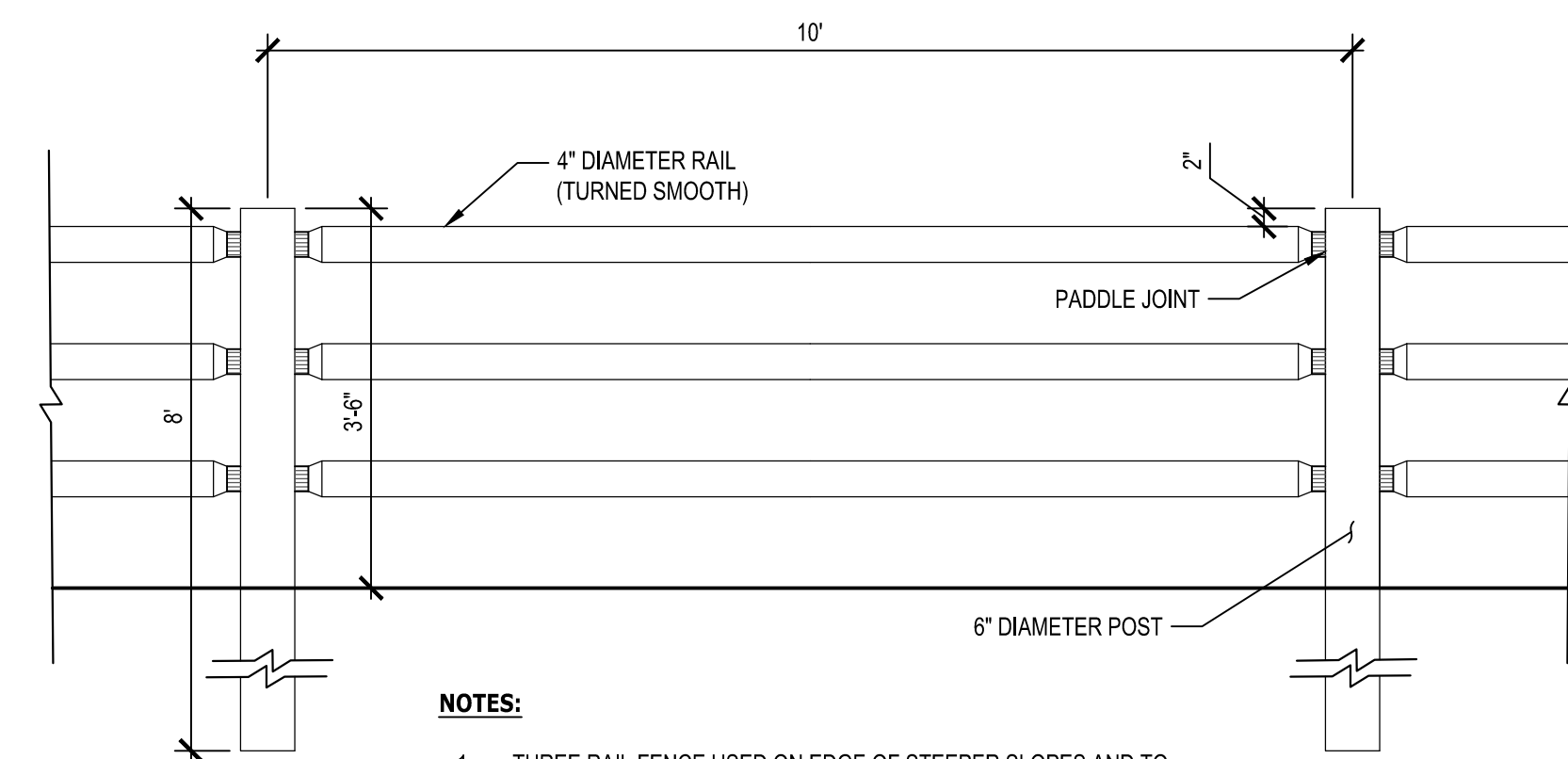


- NOTE:
1. ALL FENCE POST POLES SHALL BE INSPECTED BY THE OWNER/ENGINEER PRIOR TO THE INSTALLATION OF CONCRETE AND FENCE POST.

3 FENCE POST FOOTING, TYP.

NOT TO SCALE

CT-BP-03



- NOTES:
1. THREE RAIL FENCE USED ON EDGE OF STEEPER SLOPES AND TO RESTRICT LIGHT TRAFFIC.
 2. ALL WOOD IS TO BE PRESSURE TREATED, 40 CCA TIMBERS.

6 ROUND RAIL FENCE

NOT TO SCALE

CT-BP-88

Consultants:

Revisions:

No.	Date	Description
1	2/03/23	REVISED

COA:

Seal:

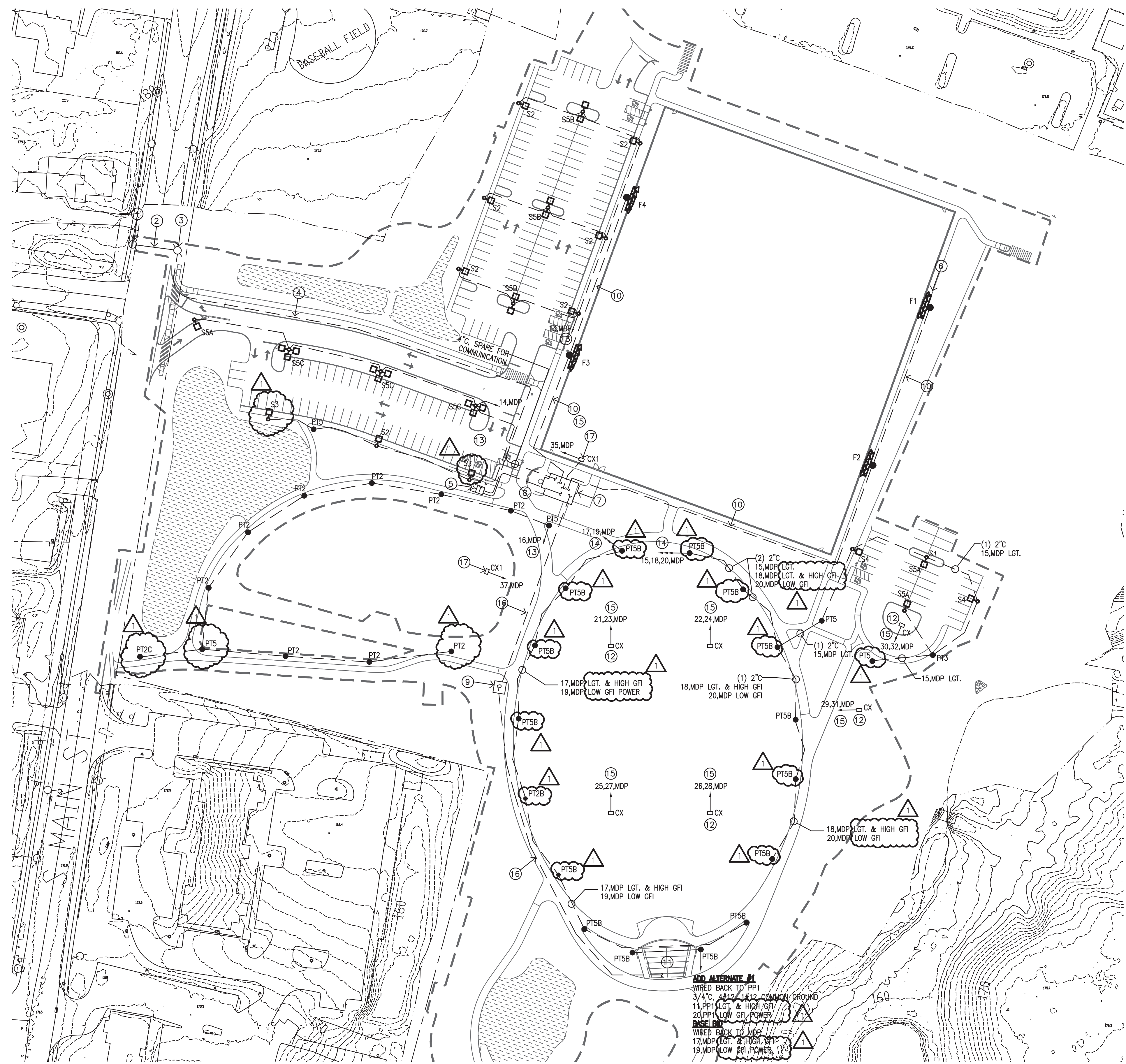
Issued For:
BID DOCUMENTS

Scale: N.T.S.

Date: 1/11/2023
 Drawn By: --
 Reviewed By: --
 Approved By: --
 W&S Project No.: ENG22 - 0258
 W&S File No.:

Drawing Title:
SITE CONSTRUCTION DETAILS

Sheet Number:
L911

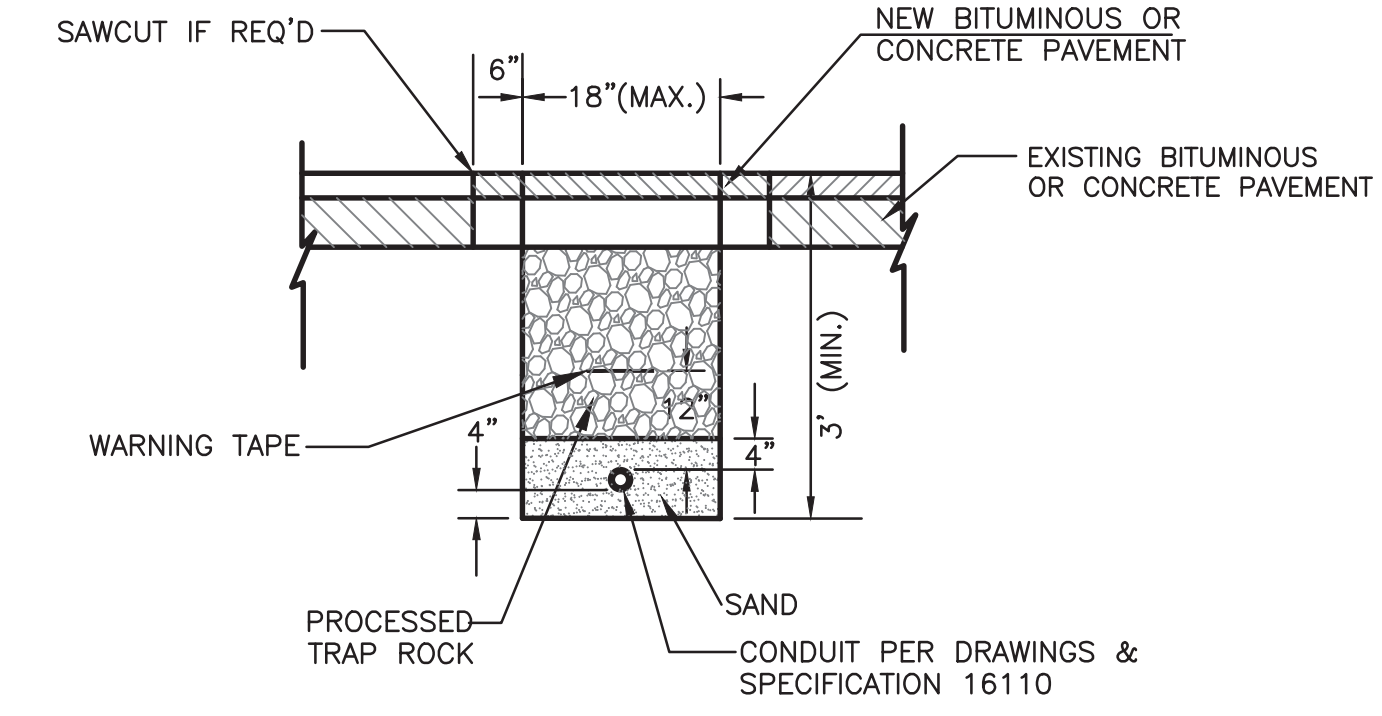


ELECTRICAL SITE PLAN
SCALE: 1" = 60'-0"

1
E1

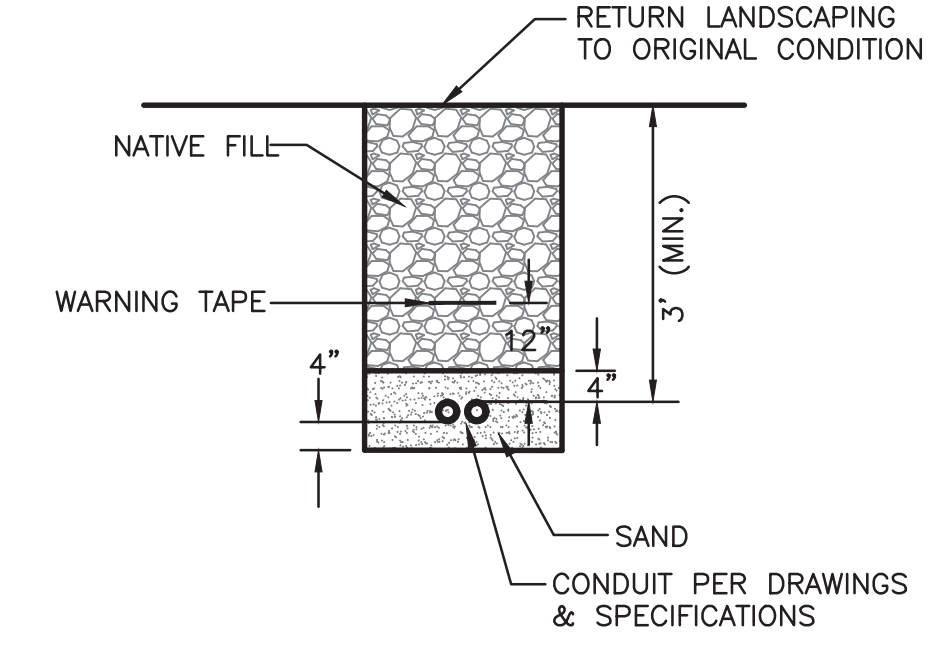
- ### DRAWING KEY NOTES
- 1 APPROXIMATE LOCATION OF EXISTING UTILITY POLE #3141 TO BE RE-USED TO SUIT NEW ELECTRICAL PRIMARY FEEDER.
 - 2 PROPOSED ROUTING FOR OVERHEAD PRIMARY SERVICE TO BE INSTALLED BY UTILITY.
 - 3 PROPOSED LOCATION FOR NEW UTILITY POLE TO BE INSTALLED BY UTILITY.
 - 4 PROPOSED ROUTING FOR PRIMARY UNDERGROUND SERVICE. CONTRACTOR TO PROVIDE 4" CONDUIT TO SUIT PRIMARY SERVICE AND 4" CONDUIT SPARE WITH PULL ROPE TO SUIT COMMUNICATION. COORDINATE ROUTE/TRENCH WITH EXISTING CONDITION IN THE FIELD. REFER TO ONE-LINE RISER DIAGRAM FOR ADDITIONAL INFORMATION.
 - 5 PROPOSED LOCATION FOR UTILITY PAD MOUNTED TRANSFORMER TO BE PROVIDED BY EVERSOURCE AND INSTALLED BY CONTRACTOR. COORDINATE FINAL LOCATION WITH UTILITY AND CIVIL ENGINEER. REFER TO ONE-LINE RISER DIAGRAM AND CONCRETE TRANSFORMER PAD DETAIL FOR ADDITIONAL INFORMATION.
 - 6 REFER TO SPECIFICATIONS, ONE-LINE RISER DIAGRAM, PANELBOARD SCHEDULE, AND SPORTS LIGHTING CONTROL SCHEMATIC FOR INFORMATION ABOVE SPORT LIGHTING SYSTEM. TYPICAL.
 - 7 PROPOSED RESTROOM PAVILION SHOWN FOR REFERENCE PURPOSE ONLY. REFER TO ELECTRICAL RESTROOM PAVILION FLOOR PLAN IN SHEET E-2 FOR ELECTRICAL EQUIPMENT LOCATION AND ADDITIONAL INFORMATION.
 - 8 PROPOSED ROUTING FOR SECONDARY UNDERGROUND SERVICE. PROVIDE (2) SETS, 4" PVC SCH.40 UNDERGROUND, 4 #350KCMIL.
 - 9 PROPOSED LOCATION FOR IN-GROUND PULL BOX. REFER TO IN-GROUND JUNCTION/PULL BOX DETAIL FOR ADDITIONAL INFORMATION.
 - 10 PROPOSED ROUTE FOR UNDERGROUND CONDUIT TO SUIT FIELD LIGHTING. PROVIDE 2" PVC SCHEDULE-40 REFER TO SPORT LIGHTING CONTROL SCHEMATIC FOR WIRING INFORMATION, PANELBOARD SCHEDULE "MDP" FOR CIRCUIT BREAKER SIZE, AND ONE-LINE DIAGRAM FOR ADDITIONAL INFORMATION.
 - 11 PROPOSED ENTERTAINMENT STAGE SHOWN FOR REFERENCE PURPOSE ONLY. REFER TO ELECTRICAL ENTERTAINMENT STAGE FLOOR PLAN FOR ELECTRICAL EQUIPMENT LOCATION AND ADDITIONAL INFORMATION.
 - 12 PROPOSED LOCATION FOR IN-GROUND COMBOX MANUFACTURER SPORTSFIELD: CBNG1830 FOR NATURAL GRASS APPLICATIONS. REWORK COMBOX AS REQUIRED TO ACCOMMODATE POWER CONNECTION WITH 50 AMP 208V-1PH TWIST-LOCK FEMALE RECEPTACLE. CABLE WITH INPUT AND OUTPUT LENGTH TO BE 15' COILED INTO THE COMBOX. FURNISH AS BASIS OF DESIGN AND TURN OVER TO OWNERS A HUBBELL SPIDER II SSB2 WITH (6) 20A, 125V STRAIGHT BLADE, (1) TWIST-LOCK 30A, 208V, (1) 50A, 125/208V TWIST-LOCK INLET, (1) 50A, 125/208V TWIST-LOCK OUTLET, AND HUBBELL SCB50 50' FT INPUT / OUTPUT CABLE SET AT EACH COMBOX LOCATION. TYPICAL.
 - 13 PROVIDE 2" PVC SCHEDULE-40, 2#6, 1#10G TO SUIT LIGHTING CIRCUIT. COORDINATE UNDERGROUND ROUTING WITH EXISTING CONDITION IN THE FIELD. REFER TO TRENCHING AND BACKFILL DETAIL FOR ADDITIONAL INFORMATION.
 - 14 PROVIDE (2) 2" PVC SCHEDULE-40, 2#4, 1#8C TO SUIT LIGHTING CIRCUIT AND HIGH GFI POWER RECEPTACLES AND 2#10, 1#10G TO SUIT LOW GFI POWER RECEPTACLES IN POLE. COORDINATE UNDERGROUND ROUTING WITH EXISTING CONDITION IN THE FIELD. REFER TO TRENCHING AND BACKFILL DETAIL FOR ADDITIONAL INFORMATION.
 - 15 PROVIDE 2" PVC SCHEDULE-40, 3#4, 1#10G TO SUIT COMBOX POWER CONNECTION. COORDINATE UNDERGROUND ROUTING WITH EXISTING CONDITION IN THE FIELD. REFER TO TRENCHING AND BACKFILL DETAIL FOR ADDITIONAL INFORMATION.
 - 16 PROPOSED ROUTING FOR UNDERGROUND (2) SETS 2-1/2" PVC SCH.-40, 4#3/0, 1#3G TO SUIT ELECTRICAL PANEL PP1. COORDINATE UNDERGROUND ROUTING WITH EXISTING CONDITION IN THE FIELD. REFER TO TRENCHING AND BACKFILL DETAIL FOR ADDITIONAL INFORMATION.
 - 17 PROPOSED LOCATION FOR HALF IN-GROUND COMBOX MANUFACTURER SPORTSFIELD-CBIT1815 FOR SYNTHETIC INFILL TURF APPLICATIONS AND SPORTSFIELD-CBNG1815 FOR NATURAL GRASS APPLICATIONS. REWORK COMBOX AS REQUIRED TO ACCOMMODATE 20A, 125V GFI DUPLEX POWER RECEPTACLE WITH WEATHERPROOF IN-USE COVER. PROVIDE 3/4", PVC SCH.-40, 2#12, 1#12G BACK TO MDP PANEL. COORDINATE FINAL LOCATION WITH OWNER IN THE FIELD PRIOR INSTALLATION.

- ### DRAWING GENERAL NOTES
1. ALL CONDUITS SHOWN ON DRAWINGS ARE OR TO BE INSTALLED 48" UNDERGROUND, PVC SCHEDULE 40.
 2. PROPOSED ROUTING FOR NEW UNDERGROUND CONDUITS SHALL BE COORDINATED IN THE FIELD WITH EXISTING CONDITIONS.
 3. REFER TO SYMBOL LEGEND FOR ADDITIONAL INFORMATION.



TYPICAL TRENCHING AND BACKFILLING DETAIL
NOT TO SCALE

2
E1



TYPICAL TRENCHING AND BACKFILLING DETAIL
NOT TO SCALE

3
E1

Revisions:

No.	Date	Description
1	2/03/23	REVISED

COA:

Seal:

Issued For:
BID DOCUMENTS

Scale: 1"=60'-0"

Date: 1/11/2023
 Drawn By: JRP
 Reviewed By: RRB
 Approved By: RRB

W&S Project No.: ENG22 - 0258
 W&S File No.:

Drawing Title:
ELECTRICAL SITE PLAN

Sheet Number:
E1

CALL BEFORE YOU DIG
 811 OR (800)922-4455
 CALL NO LESS THAN TWO FULL WORKING DAYS AND NO MORE THAN 30 DAYS PRIOR TO START OF EXCAVATION MONDAY THRU FRIDAY, 7AM TO 5PM

